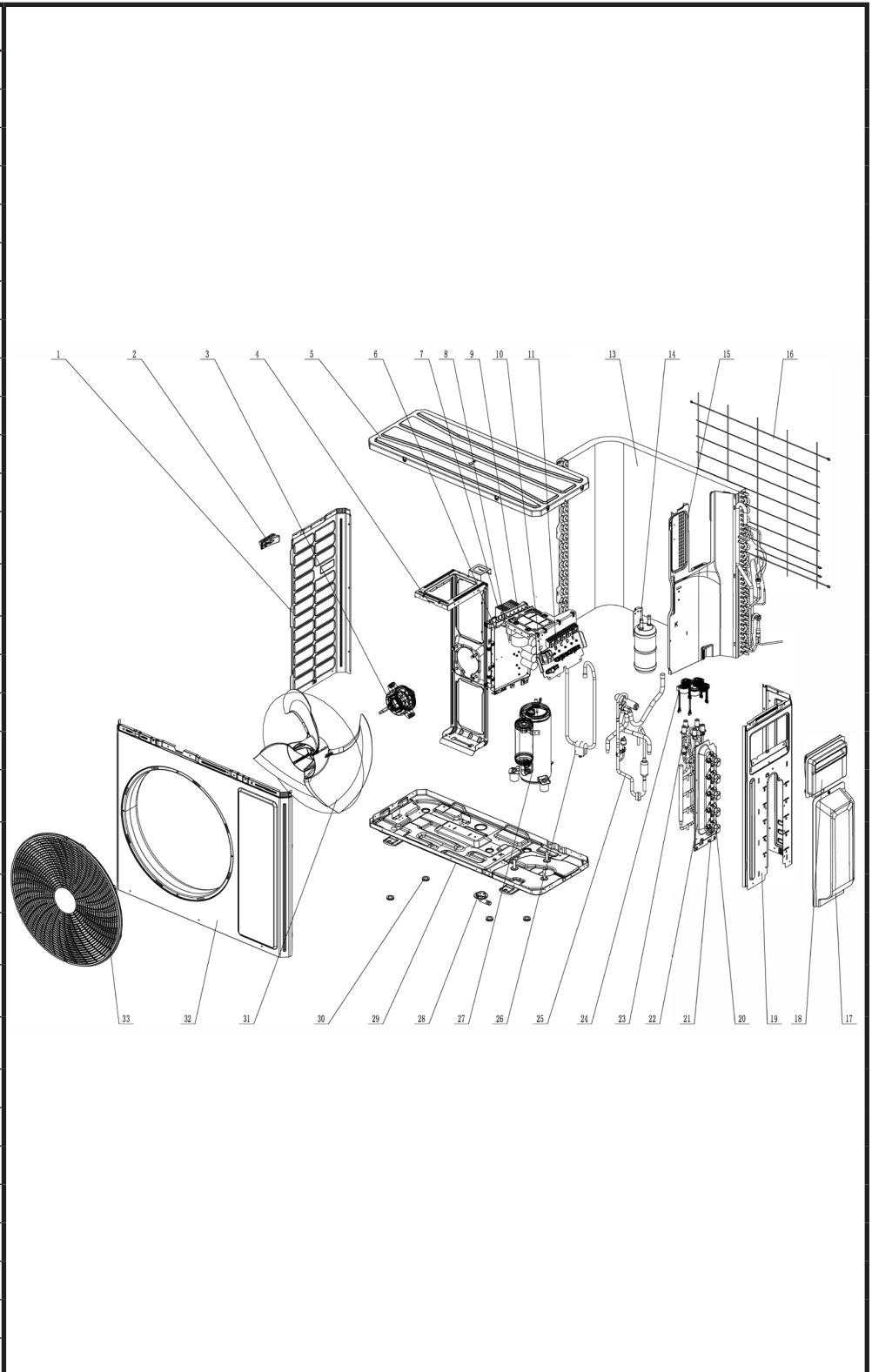


REPLACEMENT PARTS LIST

FLEX MATCH SYSTEM OUTDOOR UNIT GXH42(12.3)FMK4DH-1

| ITEM # | COMPONENT |
|--------|------------------------------------|
| 1 | LEFT SIDE PLATE |
| 2 | HANDLE |
| 3 | BRUSHLESS DC MOTOR |
| 4 | MOTOR SUPPORT SUB-ASSY |
| 5 | TOP COVER ASSY |
| 6 | ELECTRIC BOX ASSY |
| 7 | RADIATOR |
| 8 | MAIN BOARD |
| 9 | FILTER BOARD |
| 10 | TERMINAL BOARD |
| 11 | TERMINAL BOARD |
| 13 | CONDENSER ASSY |
| 14 | GAS-LIQUID SEPARATOR ASSY |
| 15 | CLAPBOARD |
| 16 | REAR GRILL |
| 17 | VALVE COVER |
| 18 | HANDLE |
| 19 | RIGHT SIDE PLATE |
| 20 | CUT OFF VALVE SUB-ASSY(1/4) |
| 21 | CUT OFF VALVE SUB-ASSY(3/8) |
| 22 | VALVE SUPPORT SUB-ASSY |
| 23 | ELECTRONIC EXPANSION VALVE ASSY |
| 24 | ELECTRIC EXPAND VALVE FITTING |
| 25 | 4-WAY VALVE ASSY (REVERSING VALVE) |
| 26 | INHALATION TUBE SUB-ASSY |
| 27 | COMPRESSOR AND FITTINGS |
| 28 | DRAINAGE JOINT |
| 29 | CHASSIS SUB-ASSY |
| 30 | DRAINAGE HOLE CAP |
| 31 | AXIAL FLOW FAN |
| 32 | CABINET |
| 33 | FRONT GRILL |



GXH42(12.3)FMK4DH-1

| | PART DESCRIPTION | PART CODE | NORTEK PART NUMBER |
|----|---|------------------|---------------------------|
| 1 | Left Side Plate | 012055060419P | 1045543 |
| 2 | Handle | 012210060010P | 1045534 |
| 3 | Brushless DC Motor (Fan Motor) | 15010406011801 | 1045448 |
| 4 | Motor Support Sub-Assy | 017012060353 | 1045542 |
| 5 | Top Cover Assy | 000097060568 | 1045521 |
| 6 | Electric Box Assy | 100002077052 | 1045520 |
| 7 | Radiator | 430034060159 | 1045539 |
| 8 | Main Board | 300027062886 | 1045437 |
| 9 | Filter Board | 300020060104 | 1045441 |
| 10 | Terminal Board | 42200006001201 | 1045538 |
| 11 | Terminal Board | 422000060015 | 1045573 |
| 13 | Condenser Assy | 011002062220 | 1045443 |
| 14 | Gas-Liquid Separator Assy | 07225017 | 1032551 |
| 15 | Clapboard | 012051061706 | 1045537 |
| 16 | Rear Grill | 016001060101 | 1045536 |
| 17 | Valve Cover | 200087060009 | 1045535 |
| 18 | Handle | 2623305301 | 1032501 |
| 19 | Right Side Plate | 01205606056501P | 1045533 |
| 20 | Cut Off Valve Sub-Assy (1/4) | 030057060367 | 1045556 |
| 21 | Cut Off Valve Sub-Assy (3/8) | 030057060366 | 1045555 |
| 22 | Valve Support Sub-Assy | 017104060061P | 1045519 |
| 23 | Electronic Expansion Valve Assy | 030174060240 | 1045439 |
| 24 | Electric Expand Valve Fitting (EEV Solenoid Coil) | 07200206002301 | 1045453 |
| 25 | 4-Way Valve Assy (Reversing Valve) | 030152061151 | 1045442 |
| 26 | Inhalation Tube Sub-Assy | 030010062112 | 1045523 |
| 27 | Compressor and Fittings | 009001060896 | 1045444 |
| 28 | Drainage Joint | 26113009 | 1032573 |
| 29 | Chassis Sub-Assy | 01700006084603P | 1045522 |
| 30 | Drainage Hole Cap | 06813401 | 1032515 |
| 31 | Axial Flow Fan (Fan Blade) | 1043410000501 | 1045529 |
| 32 | Cabinet | 01202206002101P | 1045528 |

GXH42(12.3)FMK4DH-1

| | PART DESCRIPTION | PART CODE | NORTEK PART NUMBER |
|----|---|------------------|---------------------------|
| 32 | Cabinet | 01202206002101P | 1045528 |
| 33 | Front Grill | 016004060015 | 1045527 |
| 34 | Magnet Coil (Reversing Valve Coil) (Not Shown) | 4300040072 | 1014115 |
| 35 | Electric Expand Valve Fitting (EEV Solenoid Coil) (Not Shown) | 07200206002303 | 1045452 |
| 36 | Electric Expand Valve Fitting (EEV Solenoid Coil) (Not Shown) | 07200206002304 | 1045451 |
| 37 | Electric Expand Valve Fitting (EEV Solenoid Coil) (Not Shown) | 07200206002305 | 1045450 |
| 38 | Electric Expand Valve Fitting (EEV Solenoid Coil)(Not Shown) | 07200206002335 | 1045438 |
| 39 | Compressor Overload Protector HPC115/95U1 (Not Shown) | 00183031 | 1045122 |
| 40 | Compressor Overload Protector KSD115°C (Not Shown) | 00183032 | 1032780 |
| 41 | Pressure Protect Switch (Not Shown) | 4602000604 | 1045526 |
| 42 | Temperature Sensor (Discharge, Coil, and Ambient sensor) (Not Shown) | 3900030815 | 1045446 |
| 43 | Sensor Sub-Assy (Liquid & Gas Sensors) (Not Shown) | 39000206003904 | 1045436 |
| 44 | Adapter Pipes 3/8-in to 5/8-in (Not Shown) | 6654100009 | 1017000 |
| 45 | Adapter Pipes 3/8-in to 1/2-in (Not Shown) | 6654100013 | 1017001 |
| 46 | Adapter Pipes 1/4-in to 3/8-in (Not Shown) | 6654104 | 1017002 |

