

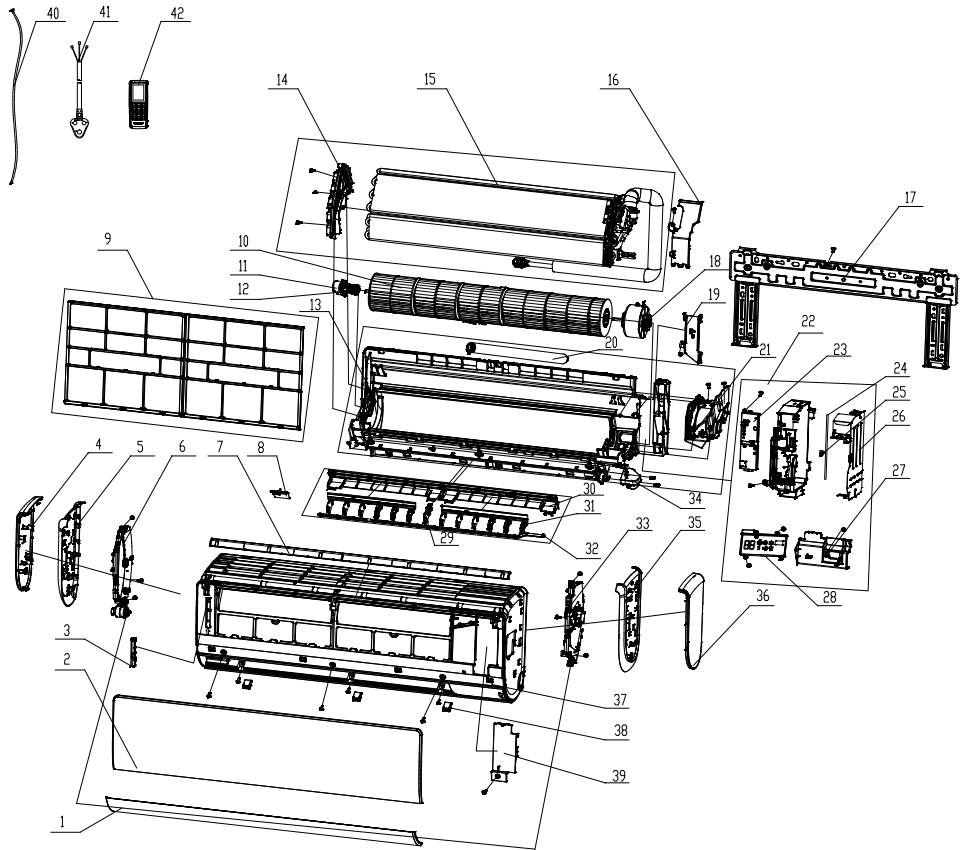
REPLACEMENT PARTS LIST

U-CROWN SYSTEM

INDOOR UNIT

GHH18(5.3)KSK4DH

| ITEM # | COMPONENT |
|--------|--|
| 1 | GUIDE LOUVER |
| 2 | FRONT PANEL |
| 3 | STAND BAR |
| 4 | LEFT SIDE PLATE |
| 5 | LEFT DECORATIVE BOARD |
| 6 | LEFT DRIVING BOX SUB-ASSY |
| 7 | DECORATIVE STRIP (UP) |
| 8 | COVER PLATE (AIR OUTLET) |
| 9 | FILTER SUB-ASSY |
| 10 | CROSS FLOW FAN |
| 11 | RING OF BEARING |
| 12 | O-GASKET SUB-ASSY OF BEARING |
| 13 | REAR CASE ASSY |
| 14 | EVAPORATOR SUPPORT |
| 15 | EVAPORATOR ASSY |
| 16 | BREAKWATER |
| 17 | WALL MOUNTING FRAME |
| 18 | FAN MOTOR |
| 19 | CONNECTING PIPE CLAMP |
| 20 | DRAINAGE HOSE |
| 21 | MOTOR PRESS PLATE |
| 22 | ELECTRIC BOX ASSY |
| 23 | DETECTING PLATE |
| 24 | MAIN BOARD |
| 25 | JUMPER |
| 26 | SHIELD COVER OF ELECTRIC BOX SUB-ASSY |
| 27 | MOUSEPROOF BOARD |
| 28 | DISPLAY BOARD |
| 29 | AIR LOUVER |
| 30 | HELICOID TONGUE SUB-ASSY |
| 31 | AIR LOUVER |
| 32 | SWING LEVER |
| 33 | RIGHT DRIVING BOX SUB-ASSY |
| 34 | LOUVER MOTOR SUB-ASSY (LEFT AND RIGHT) |
| 35 | RIGHT DECORATIVE BOARD |
| 36 | RIGHT SIDE PLATE |
| 37 | FRONT CASE ASSY |
| 38 | SCREW COVER |
| 39 | ELECTRIC BOX COVER SUB-ASSY |
| 40 | CONNECTING CABLE |
| 41 | POWER CORD |
| 42 | REMOTE CONTROLLER |



GHH18(5.3)KSK4DH

| | PART DESCRIPTION | PART CODE | NORTEK PART NUMBER |
|----|---------------------------------------|------------------|---------------------------|
| 1 | Guide Louver | 1051291601 | 1025106 |
| 2 | Front Panel | 2002240906 | 1025061 |
| 3 | Stand Bar | 10582150P01 | 1032784 |
| 4 | Left Side Plate | 26112361P01 | 1032785 |
| 5 | Left Decorative Board | 20192600D | 1032786 |
| 6 | Left Driving Box Sub-Assy | 20112201 | 1032787 |
| 7 | Decorative Strip (UP) | 20192602D | 1032788 |
| 8 | Cover Plate (Air Outlet) | 20122193P01 | 1032789 |
| 9 | Filter Sub-Assy | 11122155 | 1032790 |
| 10 | Cross Flow Fan | 10352054 | 1032791 |
| 11 | Ring of Bearing | 26152022 | 1025099 |
| 12 | O-Gasket Sub-Assy of Bearing | 7651205102 | 1025107 |
| 13 | Rear Case Assy | 00000100057 | 1025115 |
| 14 | Evaporator Support | 24212170 | 1032793 |
| 15 | Evaporator Assy | 01100100162 | 1025093 |
| 16 | Breakwater | 26112359 | 1032795 |
| 17 | Wall Mounting Frame | 01252040 | 1017046 |
| 18 | Fan Motor | 15012466 | 1032396 |
| 19 | Connecting Pipe Clamp | 2611216401 | 1028794 |
| 20 | Drainage Hose | 05230014 | 1028812 |
| 21 | Motor Press Plate | 26112360 | 1032796 |
| 22 | Electric Box Assy | 10000203763 | 1041652 |
| 23 | Detecting Plate | 30110133 | 1032798 |
| 24 | Main Board | 30138000611 | 1017047 |
| 25 | Jumper | 4202021919 | 1032432 |
| 26 | Shield Cover of Electric Box Sub-Assy | 01592131 | 1032800 |
| 27 | Mouseproof Board | — | — |
| 28 | Display Board | 30568247 | 1025060 |
| 29 | Air Louver | 10512336 | 1032802 |
| 30 | Helicoid Tongue Sub-Assy | 26112560 | 1032803 |
| 31 | Air Louver | 10512766 | 1032804 |

GHH18(5.3)KSK4DH

| | PART DESCRIPTION | PART CODE | NORTEK PART NUMBER |
|----|--|-----------------|--------------------|
| 32 | Swing Lever | — | — |
| 33 | Right Driving Box Sub-Assy | 20112200 | 1032806 |
| 34 | Louver Motor Sub-Assy (Left and Right) | 15002021 | 1032807 |
| 35 | Right Decorative Board | 20192601D | 1032808 |
| 36 | Right Side Plate | 26112362P01 | 1032809 |
| 37 | Front Case Assy | 20022418 | 1032810 |
| 38 | Screw Cover | 24252029P01 | 1032811 |
| 39 | Electric Box Cover Sub-Assy | 00001300021 | 1032812 |
| 40 | Connecting Cable | — | — |
| 41 | Power Cord | — | — |
| 42 | Remote Controller | 30510568_L58773 | 1032813 |
| 43 | Temperature Sensor (Not Shown) | 390000595 | 1032722 |
| 44 | Temperature Sensor (Not Shown) | 390000453 | 1008342 |

