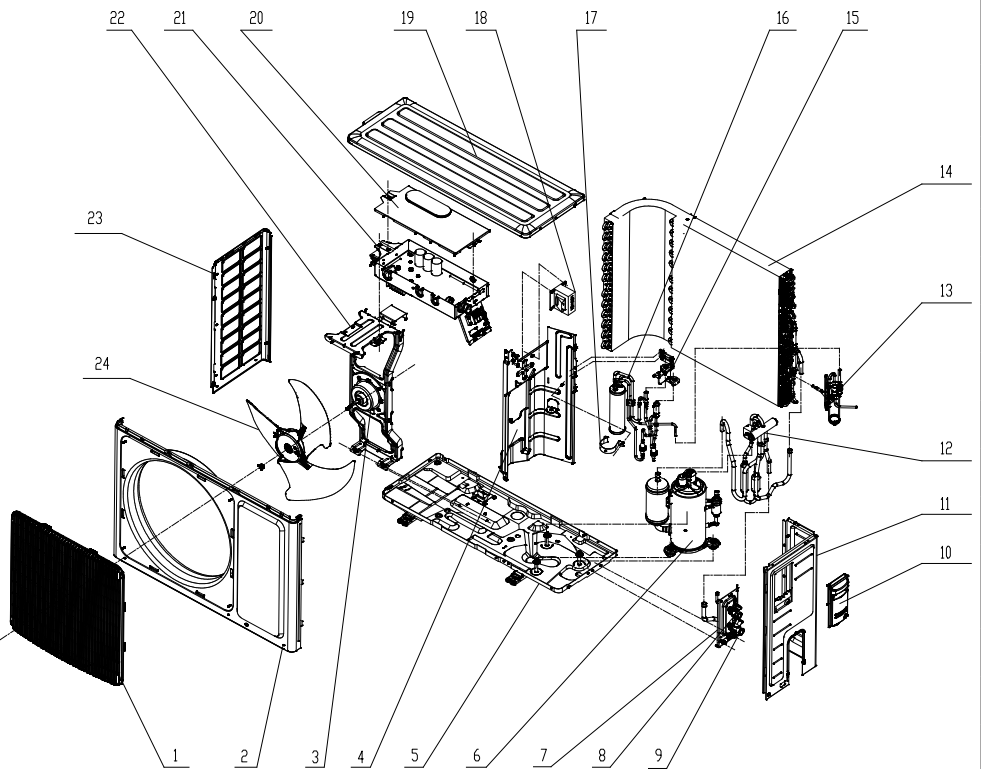


REPLACEMENT PARTS LIST

U-CROWN SYSTEM
OUTDOOR UNIT
GXH09(2.6)KSK4DH

| ITEM # | COMPONENT |
|--------|-----------------------------|
| 1 | FRONT GRILL |
| 2 | FRONT PANEL ASSY |
| 3 | FAN MOTOR |
| 4 | CLAPBOARD |
| 5 | CHASSIS SUB-ASSY |
| 6 | COMPRESSOR AND FITTINGS |
| 7 | VALVE SUPPORT SUB-ASSY |
| 8 | CUT OFF VALVE SUB-ASSY |
| 9 | CUT OFF VALVE 1/2 |
| 10 | BIG HANDLE |
| 11 | RIGHT SIDE PLATE |
| 12 | 4-WAY VALVE ASSY |
| 13 | CAPILLARY SUB-ASSY |
| 14 | CONDENSER ASSY |
| 15 | STATIONARY BARRIER |
| 16 | FLASH VAPORIZER SUB-ASSY |
| 17 | TUBE CLIP |
| 18 | REACTOR |
| 19 | COPING |
| 20 | ELECTRIC BOX COVER SUB-ASSY |
| 21 | ELECTRIC BOX ASSY |
| 22 | MOTOR SUPPORT SUB-ASSY |
| 23 | LEFT SIDE PLATE |
| 24 | AXIAL FLOW FAN |



GXH09(2.6)KSK4DH

| | PART DESCRIPTION | PART CODE | NORTEK PART NUMBER |
|----|--|------------------|---------------------------|
| 1 | Front Grill | 016004060004 | 1045119 |
| 2 | Front Panel Assy | 000003060115 | 1045118 |
| 3 | Fan Motor | 1501308507 | 1013958 |
| 4 | Clapboard | 01233510 | 1041655 |
| 5 | Chassis Sub-Assy | 0280311901P | 1041656 |
| 6 | Compressor and Fittings | 00103977 | 1041657 |
| 7 | Valve Support Sub-Assy | 01713115P | 1041658 |
| 8 | Cut Off Valve Ssub-Assy 1/4 | 0713376301 | 1041659 |
| 9 | Cut Off Valve 1/2 | 0710307901 | 1041660 |
| 10 | Big Handle | — | — |
| 11 | Right Side Plate | 0130510002P | 1041661 |
| 12 | 4-Way Valve Assy (Reversing Valve Assy) | 03073360 | 1041662 |
| 13 | Capillary Sub-Assy | 03000600305 | 1041663 |
| 14 | Condenser Assy | 01100200318 | 1041664 |
| 15 | Stationary Barrier | 01703179 | 1041665 |
| 16 | Flash Vaporizer Sub-Assy | 03007000001 | 1041666 |
| 17 | Tube Clip | 02143030 | 1041667 |
| 18 | Reactor | 43130185 | 1032336 |
| 19 | Coping (Top Cover) | 012049000006P | 1045117 |
| 20 | Electric Box Cover Sub-Assy | 0260309601 | 1028734 |
| 21 | Electric Box Assy | 10000100253 | 1041671 |
| 22 | Motor Support Sub-Assy | 01703180 | 1041672 |
| 23 | Left Side Plate | 01303169P | 1041673 |
| 24 | Axial Flow Fan (Blade) | 10333022 | 1041674 |
| 25 | Electrical Heater (Chassis) (Not Shown) | 76510004 | 1017053 |
| 26 | Compressor Gasket (Grommet) (Not Shown) | 76713074 | 1045116 |
| 27 | Compressor Overload Protector (External) (HPC 115/95) (Not Shown) | 00183051 | 1032779 |
| 25 | Electric Expansion Valve and Fitting (Green) (EEV Coil Port B) | 4304413242 | 1044972 |
| 25 | Electric Expansion Valve and Fitting (Green) (EEV Coil Port B) NOTE: For Units Manufactured Before 2015 | 4300876719 | 1014110 |
| 26 | Electric Expansion Valve and Fitting (Blue) (EEV Coil Port C) | 4304413241 | 1044971 |
| 26 | Electric Expansion Valve and Fitting (Blue) (EEV Coil Port C) NOTE: For Units Manufactured Before 2015 | 4300876718 | 1014111 |
| 27 | Wiring Clamp | 26115004 | 1032440 |

GXH09(2.6)KSK4DH

| | PART DESCRIPTION | PART CODE | NORTEK PART NUMBER |
|----|---|------------------|---------------------------|
| 28 | Compressor Overload Protector (External) (KSD115°) (Not Shown) | 00183032 | 1032780 |
| 29 | Strainer (Not Shown) | 0721302607 | 1045115 |
| 30 | Temp Sensor Sleeving (Not Shown) | 05212423 | 1032335 |
| 31 | Strainer (Not Shown) | 0721304401 | 1032675 |
| 32 | Strainer A (Not Shown) | 0721002201 | 1045114 |
| 33 | Magnet Coil (AC220V-240V/50Hz/60Hz-800) (Not Shown) | 4300008301 | 1045113 |
| 34 | Electric Expand Valve Fitting (Not Shown) | 07200206002231 | 1044615 |
| 35 | Silencer (Not Shown) | 0724300101 | 1045112 |
| 36 | Silencer (Muffler) (Not Shown) | 07245007 | 1044619 |
| 37 | Magnet Coil (Reversing Valve Coil) (Not Shown) | 4300040047 | 1032344 |
| 38 | Main Board (Not Shown) | 30138000134 | 1045111 |
| 39 | Relay (JZC-43F-012-HS) (Not Shown) | 44020382 | 1045110 |
| 40 | Fuse (T3.15AL 250V) (Not Shown) | 46010029 | 1045109 |
| 41 | Fuse (T15AH 250V) (Not Shown) | 46010408 | 1045108 |
| 42 | Rectifier (Not Shown) | 46010609 | 1045107 |
| 43 | Radiator (SRX01D12) (Not Shown) | 49013066 | 1045106 |
| 44 | Relay (16A 240VAC 16A 30VDC/12VDC) (Not Shown) | 44020427 | 1045105 |
| 45 | Terminal Block (Not Shown) | 422000060016 | 1045104 |
| 46 | Radiator (SRX02D136) (Not Shown) | 49013026 | 1032390 |
| 47 | Magnetic Ring (Not Shown) | 49010104 | 1032338 |
| 48 | Wire Clamp (Not Shown) | 71010003 | 1028737 |
| 49 | Temperature Sensor (Not Shown) | 3900007901 | 1045103 |
| 50 | Rear Grill (Not Shown) | 0147306001 | 1045102 |
| 51 | Drainage Joint (Not Shown) | 26113009 | 1032573 |
| 52 | Drainage Hole Cap (Not Shown) | 7671301802 | 1032782 |
| 53 | Valve Cover (Not Shown) | 22243005 | 1045125 |

