

**iHybrid[™] Dual Fuel Gas Heat Pump
PDF2SF Series & PDF2SF -"A" Series
15 SEER Models**



IMPORTANT

- This document is primarily intended to assist qualified individuals experienced in the proper repair or servicing of this appliance. Only factory authorized parts or accessory kits may be used with this product. Improper installation, service, adjustment, or maintenance may cause explosion, fire, electrical shock or other hazardous conditions which may result in personal injury or property damage.
- Some local codes require licensed installation / service personnel to service this type of equipment. Under no circumstances should the equipment owner attempt to install parts or service this equipment. Failure to comply with this warning could result in property damage, personal injury, or death.

**2 & 3 TON DUAL FUEL HEAT PUMP
(PDF2SF Series & PDF2SF – "A" Series)**

ITEM	DESCRIPTION	2 TON MODELS		3 TON MODELS	
		X24K-072C	X24K-080CA	X36K-100C	X36K-100CA
		920986P	920986PA	920988P	920988PA
1	ASSY, CAP, DUCT, HORIZONTAL (NOT SHOWN)	283101BR	283101BR	283101BR	283101BR
2	TOP PAN ASSY – LEFT	293781BR	293781BR	293781BR	293781BR
3	CORE, CHARGING PORT, STD FITTING (NOT SHOWN)	662103	662103	662103	662103
	CORE, CHARGING PORT, HI-FLOW (NOT SHOWN)	664331	664331	664331	664331
4	PANEL, HEAT EX. DIVIDER, 34"	D05072R	D05072R	–	–
	PANEL, HEAT EX. DIVIDER, 38"	–	–	D05075R	D05075R
	PANEL, HEAT EX. DIVIDER, 42"	–	–	–	–
5	BOTTOM PAN ASSY	D05480R	D05480R	D05480R	D05480R
	BOTTOM PAN ASSY EXT	–	–	–	–
6	RAIL, BASE, 47.23" LG	277551	277551	277551	277551
7	RAIL, BASE, 55.63" LG	277552	277552	277552	277552
8	DIVIDER PANEL ASSY, 34"	D05504R	D05504R	–	–
	DIVIDER PANEL ASSY, 38"	–	–	M0060722R	M0060722R
	DIVIDER PANEL ASSY, 42"	–	–	–	–
9	DUCT CAP ASSY	D05530R	D05530R	D05530R	D05530R
10	BLOWER PANEL ASSY, 34"	D05542BR	D05542BR	–	–
	BLOWER PANEL ASSY, 38"	–	–	D05543BR	D05543BR
	BLOWER PANEL ASSY, 42"	–	–	–	–
11	ASSY, SRV PNL, INSULATED, 34" LOUVERED	296638BR	296638BR	–	–
	ASSY, SRV PNL, INSULATED, 38" LOUVERED	–	–	296639BR	296639BR
	ASSY, SRV PNL, INSULATED, 42" LOUVERED	–	–	–	–
12	SUPPLY PANEL ASSY, 34"	D05552BR	D05552BR	–	–
	SUPPLY PANEL ASSY, 38"	–	–	D05557BR	D05557BR
	SUPPLY PANEL ASSY, 42"	–	–	–	–
13	RETURN PANEL ASSY, 34"	D05565BR	D05565BR	–	–
	RETURN PANEL ASSY, 38"	–	–	D05566BR	D05566BR
	RETURN PANEL ASSY, 42"	–	–	–	–
14	CORNER PANEL ASSY, 34"	D05628BR	D05628BR	–	–
	CORNER PANEL ASSY, 38"	–	–	D05629BR	D05629BR
	CORNER PANEL ASSY, 42"	–	–	–	–
15	ASSY, CLOSE-OFF PANEL, 34"	D05688R	D05688R	–	–
	ASSY, CLOSE-OFF PANEL, 38"	–	–	D05683R	D05683R
	ASSY, CLOSE-OFF PANEL, 42"	–	–	–	–
16	PAN, DRAIN	669190	669190	669190	669190
17	POST, CORNER, 34"	D09996BR	D09996BR	–	–
	POST, CORNER, 38"	–	–	D09997BR	D09997BR
	POST, CORNER, 42"	–	–	–	–
18	PANEL, FRONT, 34" (MODELS PRODUCED BEFORE 2/1/11)	D12462BR	D12462BR	–	–
	PANEL, FRONT, 34" (MODELS PRODUCED AFTER 2/1/11)	–	298892BR	–	–
	PANEL, FRONT, 38"	–	–	298893BR	298893BR
	PANEL, FRONT, 42"	–	–	–	–
19	WRAPPER, BLWR, HSG, 9/10X10	297214R	297214R	297214R	297214R
	WRAPPER, BLWR, HSG, 11X10	–	–	–	–
20	WHEEL, BLOWER 10 X 10	667207R	667207R	667207R	667207R
	WHEEL, BLOWER 11X10	–	–	–	–
21	MTR, VS, PROG, DF, 1/2HP, 14/15 SEER	M0034603R	–	–	–
	MTR, VS, PROG, DF, 1/2HP, 15 SEER, 2 STAGE	–	M0074348R	–	–
	MTR, VS, PROG, DF, 3/4HP, 14/15 SEER	–	–	M0034602R	–
	MTR, VS, PROG, DF, 3/4HP, 15 SEER, 2 STAGE	–	–	–	M0074349R
	MTR, VS, PROG, DF, 1HP, 14/15 SEER	–	–	–	–
	MTR, VS, PROG, DF, 1HP, 15 SEER, 2 STAGE	–	–	–	–

**2 & 3 TON DUAL FUEL HEAT PUMP
(PDF2SF Series & PDF2SF – "A" Series)**

ITEM	DESCRIPTION	2 TON MODELS		3 TON MODELS	
		X24K-072C	X24K-080CA	X36K-100C	X36K-100CA
		920986P	920986PA	920988P	920988PA
22	CONTACTOR	624712	624712	624712	624712
23	TRANSFORMER 40 VA	622336	622336	622336	622336
24	CAPAC, RUN 35 / 5 / 370-RND-MTL	620762	620762	-	620762
	CAPAC, RUN 40 / 7.5 / 370-RND-MTL	-	-	620888	620888
	CAPAC, RUN 45 / 7.5 / 370-RND-MTL	-	-	-	-
	CAPAC, RUN 80 / 7.5 / 370-RND-MTL	-	-	-	-
25	IGNITION CONTROL, 2 STAGE	903106	-	903106	-
	IGNITION / BLOWER CONTROL, 2 STG, 2 SPD	-	921378	-	921378
26	PCB, VARIABLE SPEED INTERFACE, W/ HUMIDIFICATION	624677	N/A	624677	N/A
27	BOARD, DEMAND DEFROST W/ DELAY	920806	920806	920806	920806
28	DEMAND DEFROST SENSOR (NOT SHOWN)	624740	624740	624740	624740
29	PLUG, MOLDED, L, 2-STAGE (NOT SHOWN)	634682	634682	634682	634682
30	AMBIENT SENSOR (NOT SHOWN)	296584BR	296584BR	296584BR	296584BR
31	EXHAUST DUCT ASSY	263420R	263420R	263420R	263420R
32	TOUCHUP PAINT	904038	904038	904038	904038
33	INDUCER MOTOR, SINGLE SPEED, 230V	903162	-	903162	-
	INDUCER MOTOR, 2 SPD, 230V	-	921379	-	921379
34	SWITCH, PRESSURE, NO, 1.00" W.C.	632422	-	632422	-
	SWITCH, PRESSURE, DUAL, NO., .50"/.70"W.C.	-	632555	-	632555
35	GASKET, COLLECTOR PAN	689506	689506	689506	689506
36	GASKET, INDUCER MOTOR MOUNTING	689518	689518	689518	689518
37	HEAT EXCH. PANEL ASSY, 3 TUBE	293331R	-	-	-
	HEAT EXCH. PANEL ASSY, 4 TUBE	-	M0002536R	-	-
	HEAT EXCH. PANEL ASSY, 5 TUBE	-	-	M0042504R	M0042504R
38	LIMIT SWITCH, MAIN AIR	626423	626423	626446	626446
39	PAN, COLLECTOR ASSY, 1.25" ORIFICE	-	D05766R	-	-
	PAN, COLLECTOR ASSY, 1.35" ORIFICE	D10329R	-	-	-
	PAN, COLLECTOR ASSY, 1.44" ORIFICE	-	-	-	M0074320R
	PAN, COLLECTOR ASSY, 1.50" ORIFICE	-	-	D10328R	-
40	BURNER ASSY, 2 STG VALVE, 3 TUBE	293321R	-	-	-
	BURNER ASSY, 2 STG VALVE, 4 TUBE	-	M0034104R	-	-
	BURNER ASSY, 2 STG VALVE, 5 TUBE	-	-	293323R	293323R
41	BRACKET, EXT. SERV PT (MODELS PRODUCED BEFORE 2/1/11)	269022BR	269022BR	298551BR	298551BR
	BRACKET, EXT. SERV PT (MODELS PRODUCED AFTER 2/1/11)	-	298551BR	298551BR	298551BR
42	LIMIT SWITCH, 320° F FLAME ROLLOUT	626547	626547	626547	626547
43	SENSOR, FLAME	632396	632396	632396	632396
44	BURNER, INSHOT	660812	660812	660812	660812
45	REPL. HAIL GUARD KIT (NOT SHOWN)	921213	921213	921213	921213
46	ORIFICE, MAIN BURNER, #43 DRILL (NOT SHOWN)	661043	-	-	-
	ORIFICE, MAIN BURNER, #45 DRILL (NOT SHOWN)	-	661045	661045	661045
47	MANIFOLD, GAS, 3 BURNER	664303	-	-	-
	MANIFOLD, GAS, 4 BURNER	-	664304	-	-
	MANIFOLD, GAS, 5 BURNER	-	-	664305	664305
48	DRIER, FILTER, BIFLOW	669762	669762	669762	669762
49	COVER, VENT	265040R	265240R	265040R	265240R
50	PANEL, WEATHER	263880	263880	263880	263880

**2 & 3 TON DUAL FUEL HEAT PUMP
(PDF2SF Series & PDF2SF – "A" Series)**

ITEM	DESCRIPTION	2 TON MODELS		3 TON MODELS	
		X24K-072C	X24K-080CA	X36K-100C	X36K-100CA
		920986P	920986PA	920988P	920988PA
51	SUPPORT, COIL, 34"	263394	263394	-	-
	SUPPORT, COIL, 38"	-	-	263395	263395
	SUPPORT, COIL, 42"	-	-	-	-
53	STRAP, FILTER/DRIER	258781	258781	258781	258781
54	COIL, INDOOR	283091R	283091R	D06255R	D06255R
55	TXV, INDOOR	664343	664343	664346	664346
56	COMP, COPE, ZPS20K4E-PFV-230	920334	920334	-	-
	COMP, COPE, ZPS30K4E-PFV-230	-	-	920335	920335
	COMP, COPE, ZPS40K4E-PFV-230	-	-	-	-
	COMP, COPE, ZPS49K4E-PFV-230	-	-	-	-
57	SWITCH, HIGH PRESSURE (AUTO RESET)(NOT SHOWN)	632401	632401	632401	632401
58	SERVICE PORT - MODELS PRODUCED BEFORE 2/1/11	663728	663728	664393	664393
	SERVICE PORT - MODELS PRODUCED AFTER 2/1/11	-	664393	664393	664393
59	CORE, PORT, HI, FLOW, BRASS (NOT SHOWN)	664331	664331	664331	664331
60	VALVE, GAS, 2-STAGE, H.W.	624652	624652	624652	624652
61	GROMMET, COMPRESSOR, SCROLL (NOT SHOWN)	668530	668530	668530	668530
62	COMPRESSOR SOUND BLANKET (NOT SHOWN)	689792	689792	689792	689792
63	COIL, OUTDOOR	D06262R	D06262R	2B3941R	2B3941R
64	ONE-PIECE TOP PAN	M0034710R	M0034710R	M0034710R	M0034710R
65	MOTOR, OUTDOOR FAN	622171	622171	622468	622468
66	FAN, BLADE	667357	667357	667351	667351
67	FAN, GRILLE, 24"	669335	669335	669335	669335
68	BRACKET, AMBIENT (NOT SHOWN)	296585BR	296585BR	296585BR	296585BR
69	GUARD, COIL (FORMED)	2A8453R	2A8453R	2A8454R	2A8454R
70	COMPRESSOR BOLTS (NOT SHOWN)	600400	600400	600400	600400
71	IGNITOR	903179	903179	903179	903179
72	PANEL, BLOWER DISCHARGE, 34"	281493	281493	-	-
	PANEL, BLOWER DISCHARGE, 38"	-	-	281494	281494
	PANEL, BLOWER DISCHARGE, 42"	-	-	-	-
73	BLOWER SHELF	283932	283932	283932	283932
74	DIVIDER PANEL BRACKET	2B1891	2B1891	2B1891	2B1891
75	CHANNEL, DRAIN	279722R	279722R	279722R	279722R
76	RAIN SHIELD	2B1701	2B1701	2B1701	2B1701
77	ACCESS FITTING	663812	663812	663812	663812
78	COVER, HEADER, 34"	M0034205R	M0034205R	-	-
	COVER, HEADER, 38"	-	-	M0034214R	M0034214R
	COVER, HEADER, 42"	-	-	-	-
79	DOOR, ACCESS, 34"	296633R	-	-	-
	DOOR, ACCESS, 38"	-	296648R	-	-
	DOOR, ACCESS, 42"	-	-	M0034208R	-
	DOOR, ACCESS, 42"	-	-	-	M0034216R
80	TXV, OUTDOOR	664344	664344	664348	664348
81	MOLDED PLUG (NOT SHOWN)	-	-	-	634715
82	SWITCH, LOW PRESSURE (NOT SHOWN)	632393	632393	632393	632393
83	TOP PAN - RIGHT	M0034719	M0034719	M0034719	M0034720
84	CONTROL BRACKET	298591	298591	298591	298591
85	COMFORT ALERT	624651	624651	624651	624651
86	TERMINAL BOARD, LOW VOLTAGE	632475	632475	632475	632475

**4 & 5 TON DUAL FUEL HEAT PUMP
(PDF2SF Series & PDF2SF – "A" Series)**

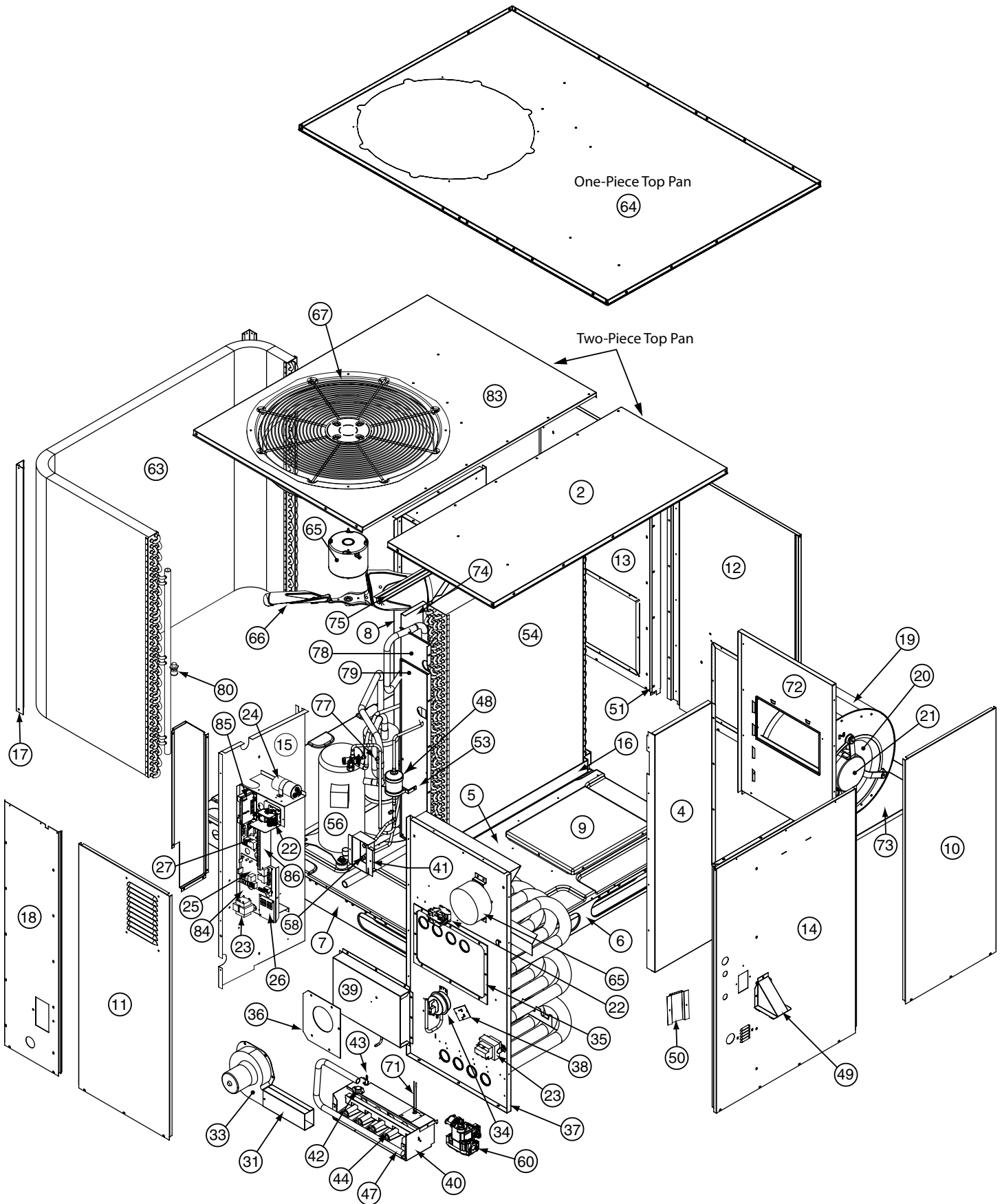
ITEM	DESCRIPTION	4 TON MODELS		5 TON MODELS	
		X48K-120C	X48K-120CA	X60K-120C	X60K-120CA
		920990P	920990PA	920992P	920992PA
1	ASSY, CAP, DUCT, HORIZONTAL (NOT SHOWN)	283101BR	283101BR	283101BR	283101BR
2	TOP PAN ASSY – LEFT	293781BR	293781BR	293781BR	293781BR
3	CORE, CHARGING PORT, STD FITTING (NOT SHOWN)	662103	662103	662103	662103
	CORE, CHARGING PORT, HI-FLOW (NOT SHOWN)	664331	664331	664331	664331
4	PANEL, HEAT EX. DIVIDER, 34"	-	-	-	-
	PANEL, HEAT EX. DIVIDER, 38"	-	-	-	-
	PANEL, HEAT EX. DIVIDER, 42"	D05074R	D05074R	D05074R	D05074R
5	BOTTOM PAN ASSY	D05480R	D05480R	-	-
	BOTTOM PAN ASSY EXT	-	-	D05481R	D05481R
6	RAIL, BASE, 47.23" LG	277551	277551	277551	277551
7	RAIL, BASE, 55.63" LG	277552	277552	277552	277552
8	DIVIDER PANEL ASSY, 34"	-	-	-	-
	DIVIDER PANEL ASSY, 38"	-	-	-	-
	DIVIDER PANEL ASSY, 42"	M0060704R	M0060704R	M0060704R	M0060704R
9	DUCT CAP ASSY	D05530R	D05530R	D05530R	D05530R
10	BLOWER PANEL ASSY, 34"	-	-	-	-
	BLOWER PANEL ASSY, 38"	-	-	-	-
	BLOWER PANEL ASSY, 42"	M0060714BR	M0060714BR	M0060714BR	M0060714BR
11	ASSY, SRV PNL, INSULATED, 34" LOUVERED	-	-	-	-
	ASSY, SRV PNL, INSULATED, 38" LOUVERED	-	-	-	-
	ASSY, SRV PNL, INSULATED, 42" LOUVERED	D05547BR	D05547BR	D05547BR	D05547BR
12	SUPPLY PANEL ASSY, 34"	-	-	-	-
	SUPPLY PANEL ASSY, 38"	-	-	-	-
	SUPPLY PANEL ASSY, 42"	M0060715R	M0060715R	M0060715R	M0060715R
13	RETURN PANEL ASSY, 34"	-	-	-	-
	RETURN PANEL ASSY, 38"	-	-	-	-
	RETURN PANEL ASSY, 42"	M0060716BR	M0060716BR	M0060716BR	M0060716BR
14	CORNER PANEL ASSY, 34"	-	-	-	-
	CORNER PANEL ASSY, 38"	-	-	-	-
	CORNER PANEL ASSY, 42"	M0060717R	M0060717R	M0060717R	M0060717R
15	ASSY, CLOSE-OFF PANEL, 34"	-	-	-	-
	ASSY, CLOSE-OFF PANEL, 38"	-	-	-	-
	ASSY, CLOSE-OFF PANEL, 42"	M0060710R	M0060710R	M0060710R	M0060710R
16	PAN, DRAIN	669190	669190	669190	669190
17	POST, CORNER, 34"	-	-	-	-
	POST, CORNER, 38"	-	-	-	-
	POST, CORNER, 42"	2B1941BR	2B1941BR	2B1941BR	2B1941BR
18	PANEL, FRONT, 34"	-	-	-	-
	PANEL, FRONT, 38"	-	-	-	-
	PANEL, FRONT, 42"	298894BR	298894BR	298894BR	298894BR
19	WRAPPER, BLWR, HSG, 9/10X10	-	-	-	-
	WRAPPER, BLWR, HSG, 11X10	297219R	297219R	297219R	297219R
20	WHEEL, BLOWER 10 X 10	-	-	-	-
	WHEEL, BLOWER 11X10	667260R	667260R	667260R	667260R
21	MTR, VS, PROG, DF, 1/2HP, 14/15 SEER	-	-	-	-
	MTR, VS, PROG, DF, 1/2HP, 15 SEER, 2 STAGE	-	-	-	-
	MTR, VS, PROG, DF, 3/4HP, 14/15 SEER	-	-	-	-
	MTR, VS, PROG, DF, 3/4HP, 15 SEER, 2 STAGE	-	-	-	-
	MTR, VS, PROG, DF, 1HP, 14/15 SEER	M0034601R	-	M0034601R	-
	MTR, VS, PROG, DF, 1HP, 15 SEER, 2 STAGE	-	M0074398R	-	M0074398R

**4 & 5 TON DUAL FUEL HEAT PUMP
(PDF2SF Series & PDF2SF – "A" Series)**

ITEM	DESCRIPTION	4 TON MODELS		5 TON MODELS	
		X48K-120C	X48K-120CA	X60K-120C	X60K-120CA
		920990P	920990PA	920992P	920992PA
22	CONTACTOR	624713	624713	624713	624713
23	TRANSFORMER 40 VA	622336	622336	622336	622336
24	CAPAC, RUN 35 / 5 / 370-RND-MTL	-	-	-	-
	CAPAC, RUN 40 / 7.5 / 370-RND-MTL	-	-	-	-
	CAPAC, RUN 45 / 7.5 / 370-RND-MTL	621153	621153	-	-
	CAPAC, RUN 80 / 7.5 / 370-RND-MTL	-	-	621717	621717
25	IGNITION CONTROL, 2 STAGE	903106	-	903106	-
	IGNITION / BLOWER CONTROL, 2 STG, 2 SPD	-	921378	-	921378
26	PCB, VARIABLE SPEED INTERFACE, W/ HUMIDIFICATION	624677	N/A	624677	N/A
27	BOARD, DEMAND DEFROST W/ DELAY	920806	920806	920806	920806
28	DEMAND DEFROST SENSOR (NOT SHOWN)	624740	624740	624740	624740
29	PLUG, MOLDED, L, 2-STAGE (NOT SHOWN)	634682	634682	634682	634682
30	AMBIENT SENSOR (NOT SHOWN)	296584BR	296584BR	296584BR	296584BR
31	EXHAUST DUCT ASSY	263420R	263420R	263420R	263420R
32	TOUCHUP PAINT	904038	904038	904038	904038
33	INDUCER MOTOR, SINGLE SPEED, 230V	903162	-	903162	-
	INDUCER MOTOR, 2 SPD, 230V	-	921379	-	921379
34	SWITCH, PRESSURE, NO, 1.00" W.C.	632422	-	632422	-
	SWITCH, PRESSURE, DUAL, NO., .50"/.70"W.C.	-	632555	-	632555
35	GASKET, COLLECTOR PAN	689506	689506	689506	689506
36	GASKET, INDUCER MOTOR MOUNTING	689518	689518	689518	689518
37	HEAT EXCH. PANEL ASSY, 3 TUBE	-	-	-	-
	HEAT EXCH. PANEL ASSY, 4 TUBE	-	-	-	-
	HEAT EXCH. PANEL ASSY, 5 TUBE	M0042501R	M0042501R	M0042501R	M0042501R
38	SWITCH, LIMIT	626432	626432	626432	626432
39	PAN, COLLECTOR ASSY, 1.25" ORIFICE	-	-	-	-
	PAN, COLLECTOR ASSY, 1.35" ORIFICE	-	-	-	-
	PAN, COLLECTOR ASSY, 1.44" ORIFICE	-	-	-	-
	PAN, COLLECTOR ASSY, 1.50" ORIFICE	-	-	-	-
	PAN, COLLECTOR ASSY, 1.69" ORIFICE	-	M0074321R	-	M0074321R
	PAN, COLLECTOR ASSY, 1.88" ORIFICE	D10324R	-	D10324R	-
40	BURNER ASSY, 2 STG VALVE, 3 TUBE	-	-	-	-
	BURNER ASSY, 2 STG VALVE, 4 TUBE	-	-	-	-
	BURNER ASSY, 2 STG VALVE, 5 TUBE	293322R	293322R	293322R	293322R
41	BRACKET, EXT. SERV PT, HI-FLOW	298551BR	298551BR	298551BR	298551BR
42	LIMIT SWITCH, 320° F FLAME ROLLOUT	626547	626547	626547	626547
43	SENSOR, FLAME	632396	632396	632396	632396
44	BURNER, INSHOT	660812	660812	660812	660812
45	REPL. HAIL GUARD KIT (NOT SHOWN)	921213	921213	921213	921213
46	ORIFICE, MAIN BURNER, #43 DRILL (NOT SHOWN)	661043	661043	661043	661043
	ORIFICE, MAIN BURNER, #45 DRILL (NOT SHOWN)	-	-	-	-
47	MANIFOLD, GAS, 3 BURNER	-	-	-	-
	MANIFOLD, GAS, 4 BURNER	-	-	-	-
	MANIFOLD, GAS, 5 BURNER	664305	664305	664305	664305
48	DRIER, FILTER, BIFLOW	669762	669762	669762	669762
49	COVER, VENT	265040R	265240R	265040R	265240R
50	PANEL, WEATHER	263880	263880	263880	263880

**4 & 5 TON DUAL FUEL HEAT PUMP
(PDF2SF Series & PDF2SF – "A" Series)**

ITEM	DESCRIPTION	4 TON MODELS		5 TON MODELS	
		X48K-120C	X48K-120CA	X60K-120C	X60K-120CA
		920990P	920990PA	920992P	920992PA
51	SUPPORT, COIL, 34"	-	-	-	-
	SUPPORT, COIL, 38"	-	-	-	-
	SUPPORT, COIL, 42"	263396	263396	263396	263396
53	STRAP, FILTER/DRIER	258780	258780	258780	258780
54	COIL, INDOOR	2B3721R	2B3721R	2B4001R	2B4001R
55	TXV, INDOOR	664350	664350	664275	664275
56	COMP, COPE, ZPS20K4E-PFV-230	-	-	-	-
	COMP, COPE, ZPS30K4E-PFV-230	-	-	-	-
	COMP, COPE, ZPS40K4E-PFV-230	920336	920336	-	-
	COMP, COPE, ZPS49K4E-PFV-230	-	-	920337	920337
57	SWITCH, HIGH PRESSURE (AUTO RESET)(NOT SHOWN)	632401	632401	632401	632401
58	SERVICE PORT	664393	664393	664393	664393
59	CORE, PORT, HI, FLOW, BRASS (NOT SHOWN)	664331	664331	664331	664331
60	VALVE, GAS, 2-STAGE, H.W.	624652	624652	624652	624652
61	GROMMET, COMPRESSOR, SCROLL (NOT SHOWN)	668530	668530	668530	668530
62	COMPRESSOR SOUND BLANKET (NOT SHOWN)	689792	689792	689793	689793
63	COIL, OUTDOOR	2B3711R	2B3711R	2B5011R	2B5011R
64	ONE-PIECE TOP PAN	M0034710R	M0034710R	M0034716R	M0034716R
65	MOTOR, OUTDOOR FAN	622468	622468	621990	621990
66	FAN, BLADE	667351	667351	667351	667351
67	FAN, GRILLE, 24"	669335	669335	669335	669335
68	BRACKET, AMBIENT (NOT SHOWN)	296585BR	296585BR	296585BR	296585BR
69	GUARD, COIL (FORMED)	2B4611R	2B4611R	2B4871R	2B4871R
70	COMPRESSOR BOLTS (NOT SHOWN)	600400	600400	600400	600400
71	IGNITOR	903179	903179	903179	903179
72	PANEL, BLOWER DISCHARGE, 34"	-	-	-	-
	PANEL, BLOWER DISCHARGE, 38"	-	-	-	-
	PANEL, BLOWER DISCHARGE, 42"	281495	281495	281495	281495
73	BLOWER SHELF	283932	283932	283932	283932
74	DIVIDER PANEL BRACKET	2B1891	2B1891	2B1891	2B1891
75	CHANNEL, DRAIN	279722R	279722R	279722R	279722R
76	RAIN SHIELD	2B1701	2B1701	2B1701	2B1701
77	ACCESS FITTING	663812	663812	663812	663812
78	COVER, HEADER, 34"	-	-	-	-
	COVER, HEADER, 38"	-	-	-	-
	COVER, HEADER, 42"	M0034209R	M0034209R	M0034209R	M0034209R
79	DOOR, ACCESS, 34"	296633R	-	-	-
	DOOR, ACCESS, 38"	-	296648R	-	-
	DOOR, ACCESS, 42"	-	-	M0034208R	-
	DOOR, ACCESS, 42"	-	-	-	M0034216R
80	TXV, OUTDOOR	664344	664344	664348	664348
81	MOLDED PLUG (NOT SHOWN)	-	-	-	634715
82	SWITCH, LOW PRESSURE (NOT SHOWN)	632393	632393	632393	632393
83	TOP PAN - RIGHT	M0034719	M0034719	M0034719	M0034720
84	CONTROL BRACKET	298591	298591	298591	298591
85	COMFORT ALERT	624651	624651	624651	624651
86	TERMINAL BOARD, LOW VOLTAGE	632475	632475	632475	632475



NORDYNE
COMPLETE COMFORT. GENUINE VALUE.

Specifications & illustrations subject to change without notice or incurring obligations.
O' Fallon, MO | Printed in U.S.A. (02/11)



709171A (Replaces 7091710)