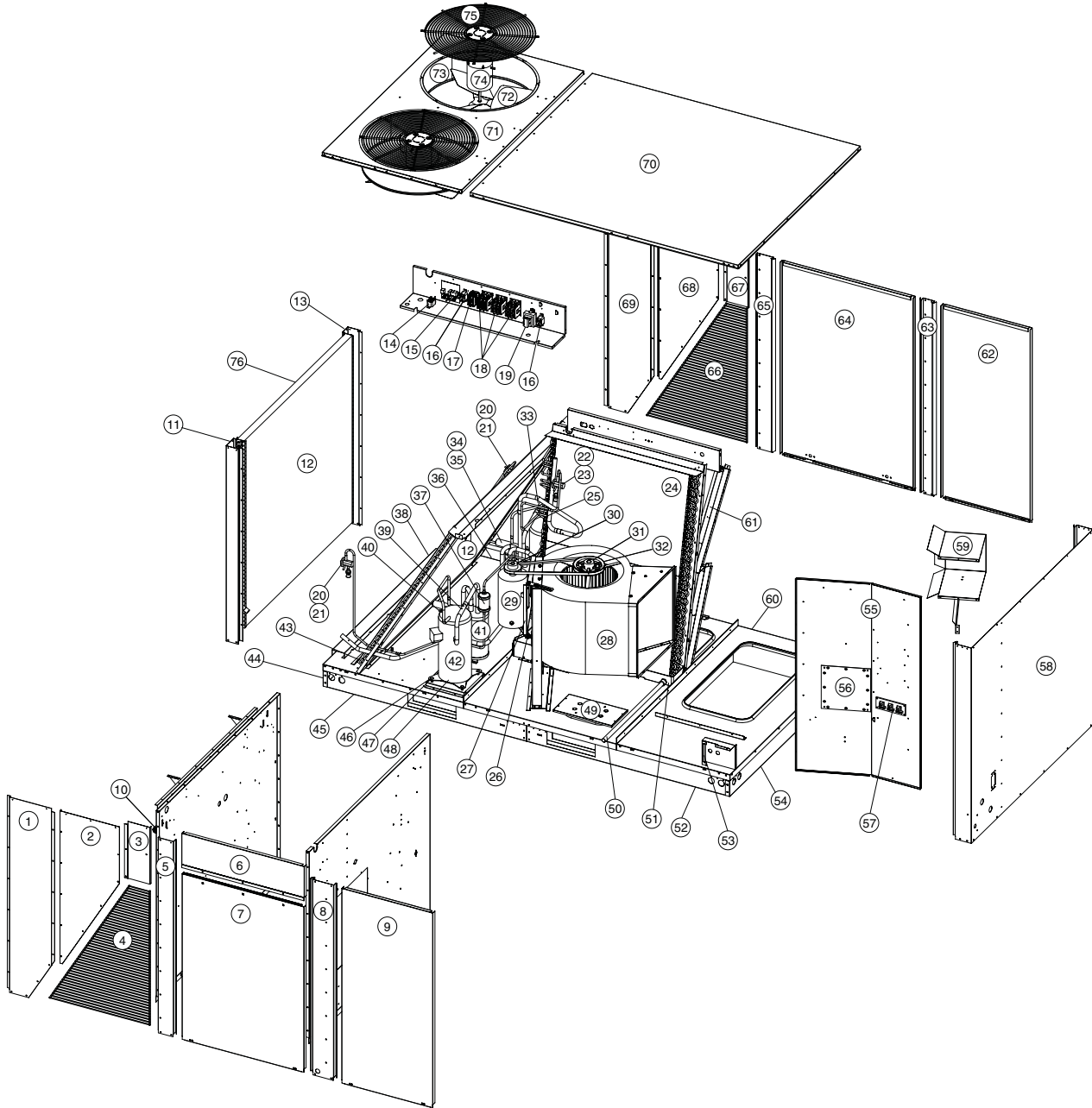


REPLACEMENT PARTS LIST

Single Package Heat Pump
 Electric Heating/Electric Cooling Unit
 Q6SP -090/120 Series



7.5 and 10 Ton Model Shown

Q6SP -090/120 Series Single Package Heat Pump

REPLACEMENT PARTS LIST			Q6SP-090*		Q6SP-120*	
Item	Part #	Description	208/230 V 3 Phase	460 V 3 Phase	208/230 V 3 Phase	460 V 3 Phase
1	291301R	Panel, Coil Access-Front	1	1	1	1
2	291361R	Panel, Ext. Condenser-Front	1	1	1	1
3	291371R	Panel, Wire Access-Front	1	1	1	1
4	669625	Guard, Grille, Comp, Closeoff-Front	1	1	1	1
5	M0025180R	Panel, Ext. Condenser/Blower Divider-Front	1	1	1	1
6	292131R	Panel, Control Access	1	1	1	1
7	M0025173R	Panel, Blower Access	1	1	1	1
8	M0025189R	Panel, Ext. Blower/Heat Exchanger	1	1	1	1
9	M0025124R	Panel, Element Access	1	1	1	1
10	622132	Capacitors	2	2	2	2
11	288781R	Post, Corner-Front	1	1	1	1
12	290811R	Complete Coil Assembly, Outdoor, 7.5 Ton	2	2		
	298571R	Complete Coil Assembly, Outdoor, 10 Ton			2	2
13	288771R	Post, Corner-Back	1	1	1	1
14	622091	Relay, DPDT	1	1	1	1
15	624656	Board, Defrost, Optional Delay	1	1	1	1
16	621867	Relay, DPST	2	2	2	2
17	621668	Contactora, 2 Pole	1	1	1	1
18	621832	Contactora, 3 Pole	3	3	3	3
19	621783	Transformer,208-230V, 75 VA w/ 4 Amp Crkt. Brkr.	1		1	
	621795	Transformer,460V, 75 VA w/ 4 Amp Crkt. Brkr.		1		1
20	664067	Outdoor Restrictor, 7.5 Ton (0.067" Dia.)	2	2		
	664080	Outdoor Restrictor, 10 Ton (0.080" Dia.)			2	2
	664194	Outdoor Swivel Connection	2	2	2	2
21	663582	Distributor, Outdoor, 5 Crkt, 7.5 Ton (Not Shown)	2	2		
	663584	Distributor, Outdoor, 6 Circuit, 10 Ton (Not Shown)			2	2
22	669578	Thermostatic Expansion Valve-Indoor, 7.5 Ton	2	2		
	664894	Thermostatic Expansion Valve-Indoor, 10 Ton			2	2
23	663638	Distributor, Indoor, 6 Crkt, 7.5 Ton (Not Shown)	2	2		
	664296	Distributor, Indoor, 7 Circuit, 10 Ton (Not Shown)			2	2
24	296921R	Complete Coil Assembly, Indoor, 7.5 Ton	2	2		
	287821R	Complete Coil Assembly, Indoor, 10 Ton			2	2
25	626476	Switch, Evaporator Freezestat	2	2	2	2
26	606241	Belt Tension Bar	1	1	1	1
27	388080R	Motor Mounting Plate	1	1	1	1
28	667285	Blower Housing and Wheel - 15 x 15	1	1	1	1

Low Static Blower Drive Models						
29	622255R	Blower Motor, 1.5 HP, 208-230/460V, 3Ph.	1	1		
	622254R	Blower Motor, 2.0 HP, 208-230/460V, 3Ph.			1	1
30	667317	Adjustable Motor Sheave, 1VP44 x 7/8"	1	1		
	667290	Adjustable Motor Sheave, 1VP40 x 7/8"			1	1
31	667373	Pulley, Indoor Blower, BK95	1	1		
	667376	Pulley, Indoor Blower, BK75			1	1
32	669431	Belt, Blower Drive, B52	1	1		
	669195	Belt, Blower Drive, B49			1	1

Q6SP -090/120 Series Single Package Heat Pump (continued)

REPLACEMENT PARTS LIST			Q6SP-090*		Q6SP-120*	
Item	Part #	Description	208/230 V 3 Phase	460 V 3 Phase	208/230 V 3 Phase	460 V 3 Phase
High Static Blower Drive Models						
29	622254R	Blower Motor, 2.0 HP, 208-230/460V, 3Ph.	1	1		
	621819R	Blower Motor, 3.0 HP, 208-230V, 3Ph.			1	
	621820R	Blower Motor, 3.0 HP, 460V, 3Ph.				1
30	667371	Adjustable Motor Sheave, 1VP50 x 7/8"	1	1	1	1
31	667368	Pulley, Indoor Blower, BK80	1	1		
	667376	Pulley, Indoor Blower, BK75			1	1
32	669431	Belt, Blower Drive, B52	1	1		
	669722	Belt, Blower Drive, B51			1	1

REPLACEMENT PARTS LIST			Q6SP-090*		Q6SP-120*	
Item	Part #	Description	208/230 V	460 V	208/230 V	460 V
33	632507	Switch, High Pressure - Manual Reset [Stg 2]	1	1	1	1
34	669466	Valve, Reversing	2	2	2	2
35	669624	Coil, Reversing Valve	2	2	2	2
36	289641R	Rail, Base - Back Left	1	1	1	1
37	669494	Filter Drier, Bi-Flow, BFK083S	2	2	2	2
38	290841R	Condenser Coil Spacer	1	1	1	1
39	632335	Switch, Low Pressure - Auto Reset [Stg 1]	1	1	1	1
	632479	Switch, Low Pressure - Auto Reset [Stg 2] - Not Shown	1	1	1	1
40	632506	Switch, High Pressure - Manual Reset [Stg 1]	1	1	1	1
41	668854	Accumulator	2	2	2	2
42	920365	Compressor, ZP39K5E-TF5-130 (208-230 V)	2			
	920364	Compressor, ZP39K5E-TFD-130 (460 V)		2		
	919611	Compressor, ZP54K5E-TF5-130 (208-230 V)			2	
	920139	Compressor, ZP54K5E-TFD-130 (460 V)				2
43	626554	Defrost Sensor	2	2	2	2
44	289621R	Rail, Base - Condenser End	1	1	1	1
45	289631R	Rail, Base - Front Left	1	1	1	1
46	600400	Compressor Bolt, 5/16-18 x 1-1/2"	8	8	8	8
47	668530	Compressor Mounting Grommet	8	8	8	8
48	632510	Crankcase Heater - 240V / 40 W [Stg 1] (Not Shown)	1		1	
	632511	Crankcase Heater - 240V / 40 W [Stg 2] (Not Shown)	1		1	
	632512	Crankcase Heater - 480V / 40 W [Stg 1] (Not Shown)		1		1
	632513	Crankcase Heater - 480V / 40 W [Stg 2] (Not Shown)		1		1
49	263920R	Bottom Power Entry Cover	1	1	1	1
50	664295R	Drain Pipe Assembly	1	1	1	1
51	669562	Condensate Drain Pan	1	1	1	1
52	292051R	Rail, Base - Front Right	1	1	1	1
53	632474	Terminal Board, Low Voltage	1	1	1	1
54	289991R	Rail, Base - Heat Exchange End	1	1	1	1
55	M0025136R	Panel, Electric Element	1	1	1	1
56	M0025139R	Element Close Off Plate	1	1	1	1
57	632366	Terminal Board, High Voltage, 3 Pole - 2/0 AWG	1	1	1	1
58	M0025171R	Panel, Ext. HX End	1	1	1	1
59	292551R	Electric Element Housing	1	1	1	1
60	292061R	Rail, Base - Back Right	1	1	1	1
61	668932	Filters 16 X 25 X 2 - U.L. Class (Not Shown)	4	4	4	4
62	386152R	Panel, HX Tube Access	1	1	1	1

Q6SP -090/120 Series Single Package Heat Pump (continued)

REPLACEMENT PARTS LIST			Q6SP-090*		Q6SP-120*	
Item	Part #	Description	208/230 V 3 Phase	460 V 3 Phase	208/230 V 3 Phase	460 V 3 Phase
63	M0025172R	Panel, Ext. HX / Evaporator Divider	1	1	1	1
64	D07162R	Panel, Evaporator Access	1	1	1	1
65	M0025174R	Panel, Ext. Evaporator / Condenser Divider	1	1	1	1
66	669673	Guard, Grille, Comp, Closeoff-Back	1	1	1	1
67	292001R	Panel, Wire Access - Back	1	1	1	1
68	291451R	Panel, Ext. Condenser - Back	1	1	1	1
69	291541R	Panel, Coil Access - Back	1	1	1	1
70	M0025178R	Pan, Heat Exchanger/Evaporator Top	1	1	1	1
71	295491R	Pan, Condenser Top, 24"	1	1	1	1
72	667364	Blade, Condenser Fan - 24", 3 Blade	1	1	1	1
73	295481R	Orifice, Condenser- Fan 24"	1	1	1	1
74	622252R	Motor, Outdoor Fan - 208/230V, 1/3 HP	1		1	
	622253R	Motor, Outdoor Fan - 460V, 1/3 HP		1		1
75	669202	Grille, Condenser Fan - 24"	1	1	1	1
76	669653	Hail Guard, Plastic Mesh	1	1	1	1

