

Replacement Kit – Vent Switch, Kit # 904574

Installation Instructions

For L1RC and G6 *TC/L Furnaces

IMPORTANT: Read these installation instructions and the furnace Installation Instructions carefully before beginning the installation.

GENERAL:

These instructions are primarily intended to assist qualified individual who has good knowledge and experience in wiring and installation of gas gun furnaces. These instructions show you how to rewire the vent switch. Some local codes require licensed installation/service personnel for installation of this type of equipment.

CONTENTS OF KIT

1. 1- Installation Instructions
2. 1- 12" wire assembly (Black)
3. 1- 26" wire assembly (Black)
4. 1- vent safety switch

 **WARNING:**

The wiring must be performed by a qualified service technician in accordance with these instructions and all codes having jurisdiction. Failure to follow these instructions could result in serious injury, property damage, or death. The qualified service technician performing this work assumes responsibility for rewiring the vent switch.

 **WARNING:**

Prior to rewiring, turn off all electrical power to the unit. Turn gas valve to the "OFF" position, and shut off the fuel supply to the furnace.

DISCONNECTING AND REWIRING VENT SWITCH (See wiring diagram)

1. Remove wire between door switch and the vent switch located on inducer (not used)
2. Remove the other wire from the vent switch and connect it to the door switch.
3. Replace vent safety switch with new vent switch.
4. Disconnect black with white stripe wire from 24 V terminal on the control board
5. Extend the transformer wire with supplied 12" black wire and connect it to vent switch on the inducer. Note: transformer wire of L1 "A" and "B" cabinet furnaces is long enough to be connected to the vent switch without the 12" extension wire
6. Connect the 26" supplied black wire to the 24 V terminal and the vent switch.

COMPLETING THE REWIRING

1. Turn on all electrical power and fuel supply to the unit
2. Turn the gas valve to "ON" position
3. Set the thermostat above room temperature to begin the heating cycle.
4. Run the furnace a couple of cycles to insure proper operation.

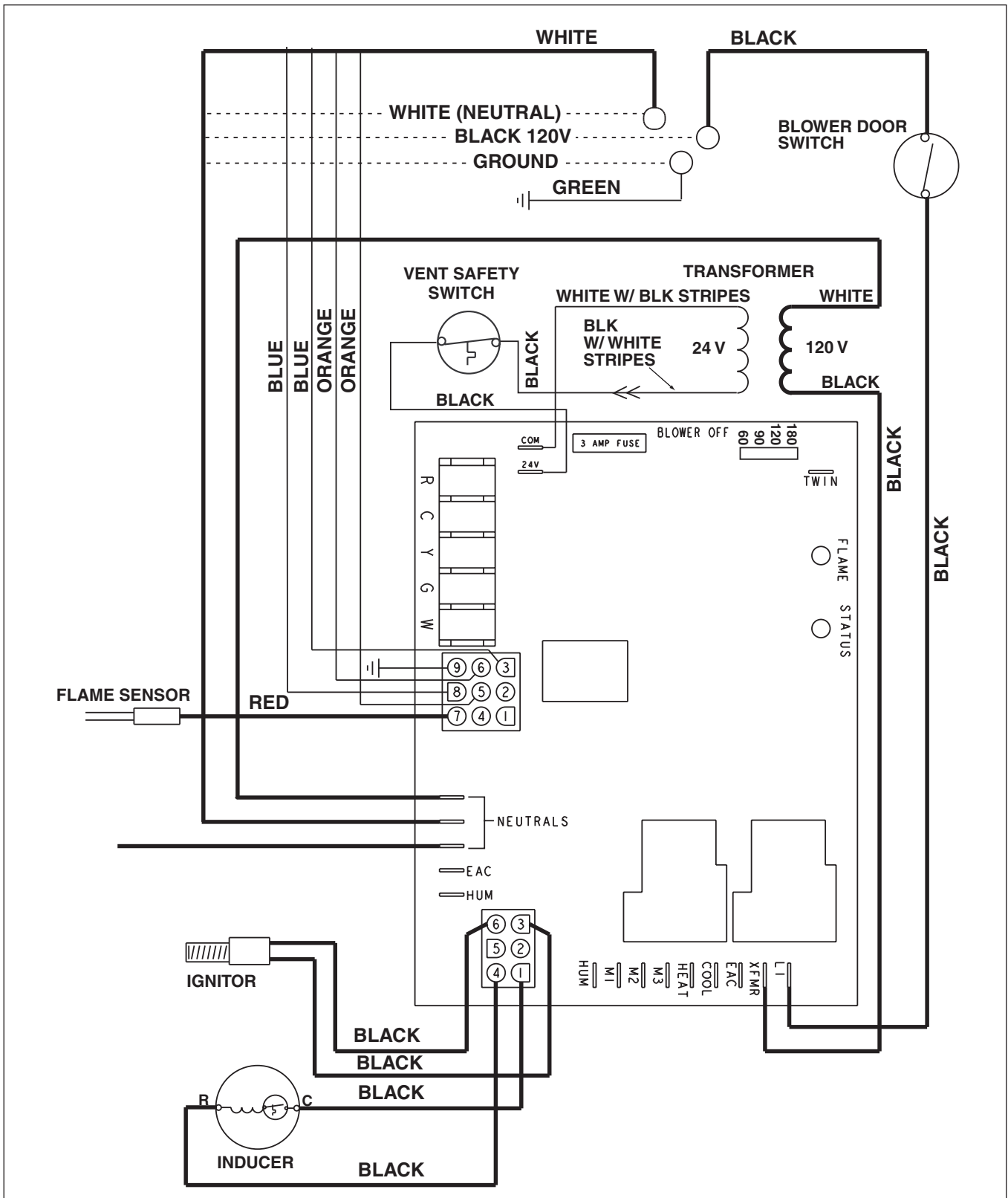


Figure 1. Wiring Diagram for Vent Switch

