

Heated Fan Control Kit

Installation Instructions

Model Series M1B, M1G, and M1S Furnaces

IMPORTANT: Read all instructions carefully before starting the installation.

General

These instructions are primarily intended to assist qualified individuals experienced in the proper installation of heating appliances. Some local codes require licensed installation/service personnel for this type of equipment.

This kit is designed for use on the NORDYNE series M1B, M1G, and M1S furnaces. Once installed, this kit will reduce the main-air blower on delay at the start of a heating cycle. Furthermore, this kit will increase the main-air blower off delay at the end of a heating cycle.

Note: It is recommended that a qualified serviceman or technician perform the installation of this kit.

WARNING:

Warning: Prior to installation, shut “OFF” all fuel and electrical power supplies to the furnace.

Installing the Kit

To Turn Off the Fuel Supply to the Furnace:

1. Set the thermostat to “OFF” or to its lowest setting.
2. Turn “OFF” all electrical power to the furnace.
3. Remove the furnace door.
4. For gas burners, push in the gas control lever and move to “OFF”. DO NOT FORCE LEVER.
5. For oil burners, shut off the fuel supply to the furnace using the manual shut-off valve.

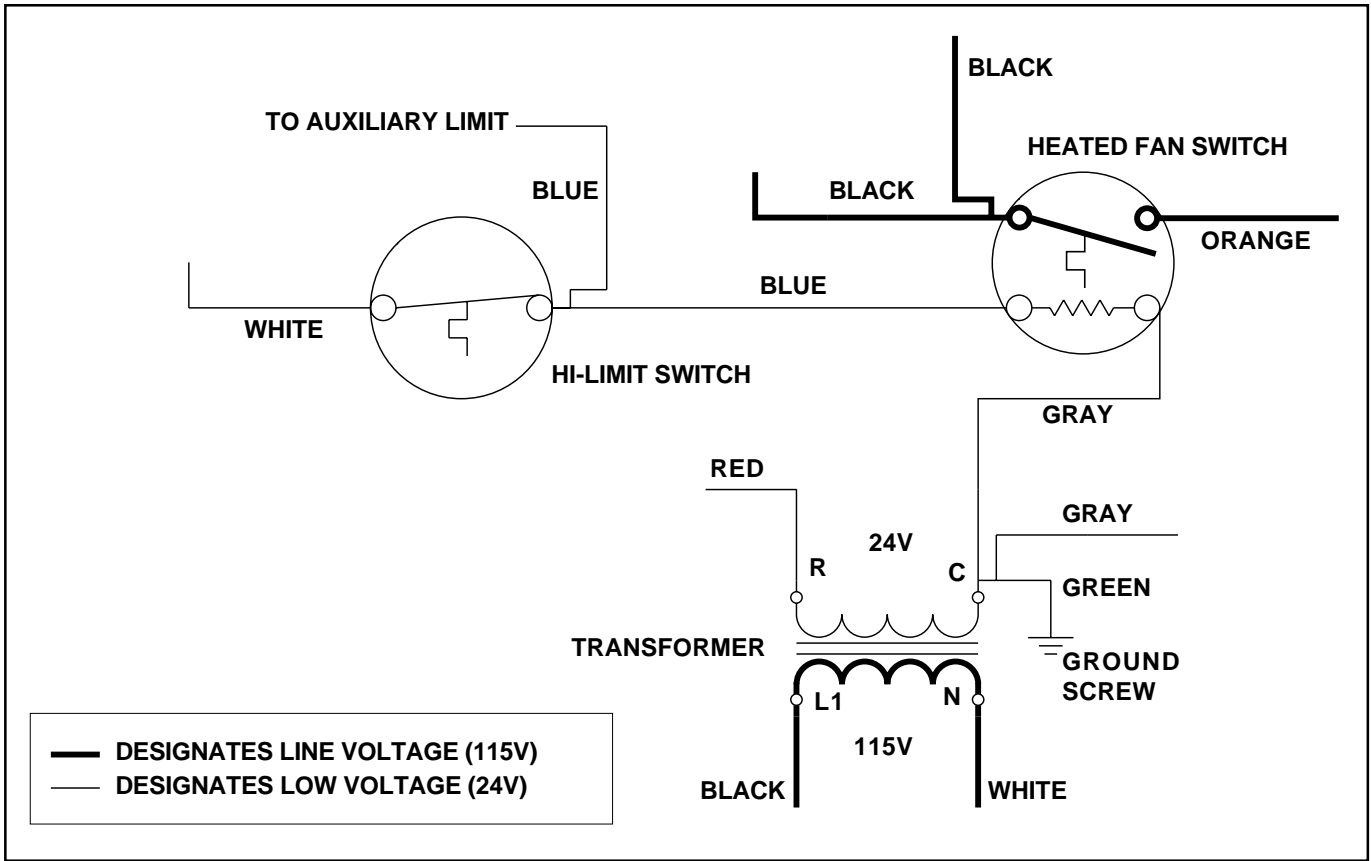
Replacing the Fan Switch

1. Follow the instructions “To Turn Off the Fuel Supply to the Furnace”.
2. Remove the control panel cover.
3. Locate the fan switch inside of the control area. Refer to the wiring diagram on the unit for more details on the location of the fan switch.
4. Remove the black and orange wires from the fan switch.

5. Remove the screw that secures the fan switch to the unit and remove the fan switch. Keep the screw, but discard the fan switch.
6. Install the heated fan switch provided with the kit using the screw removed in the previous step.
7. Reconnect the black and orange wires that were removed earlier from the fan switch to the two ¼” quick-connect terminals on the heated fan switch. Refer to the wiring diagram in Figure 1 for more details.
8. Locate the main-air limit switch inside of the control area. This limit has two terminals. Connected to one terminal is a wire that runs from the auxiliary limit switch. The other terminal has a wire that runs from “W” on the thermostat.
9. Disconnect the wire connected to the main-air limit switch that runs from the auxiliary limit.
10. Connect the blue wire with the piggy-back terminal from the heated fan switch to the terminal of the main-air limit switch from which the wire was removed in the previous step.
11. Connect the wire from the auxiliary limit switch to the piggy back terminal of the blue wire from the heated fan switch.
12. Disconnect the wire from the common terminal of the low voltage (24V) side of the transformer.
13. Connect the gray wire from the heated fan switch to the common terminal of the low voltage (24V) side of the transformer.
14. Connect the wire that was removed earlier from the common terminal of the transformer to the piggy-back terminal on the gray wire from the heated fan switch.
15. Ensure that all electrical connections are secure and tight.
16. Replace the control panel cover.

Operating the Furnace

1. Turn on all electrical power to the furnace.
2. Remove the furnace door.
3. For gas burners, push in the gas control lever and move to “ON”. DO NOT FORCE LEVER.
4. For oil burners, turn on the fuel supply to the furnace using the manual shut-off valve.
5. Follow the start-up and lighting procedures outlined in the Installation Instructions for the furnace.



7077640



7077640

Specifications and illustrations subject to change without notice and without incurring obligations. Printed in U.S.A. (11/98)