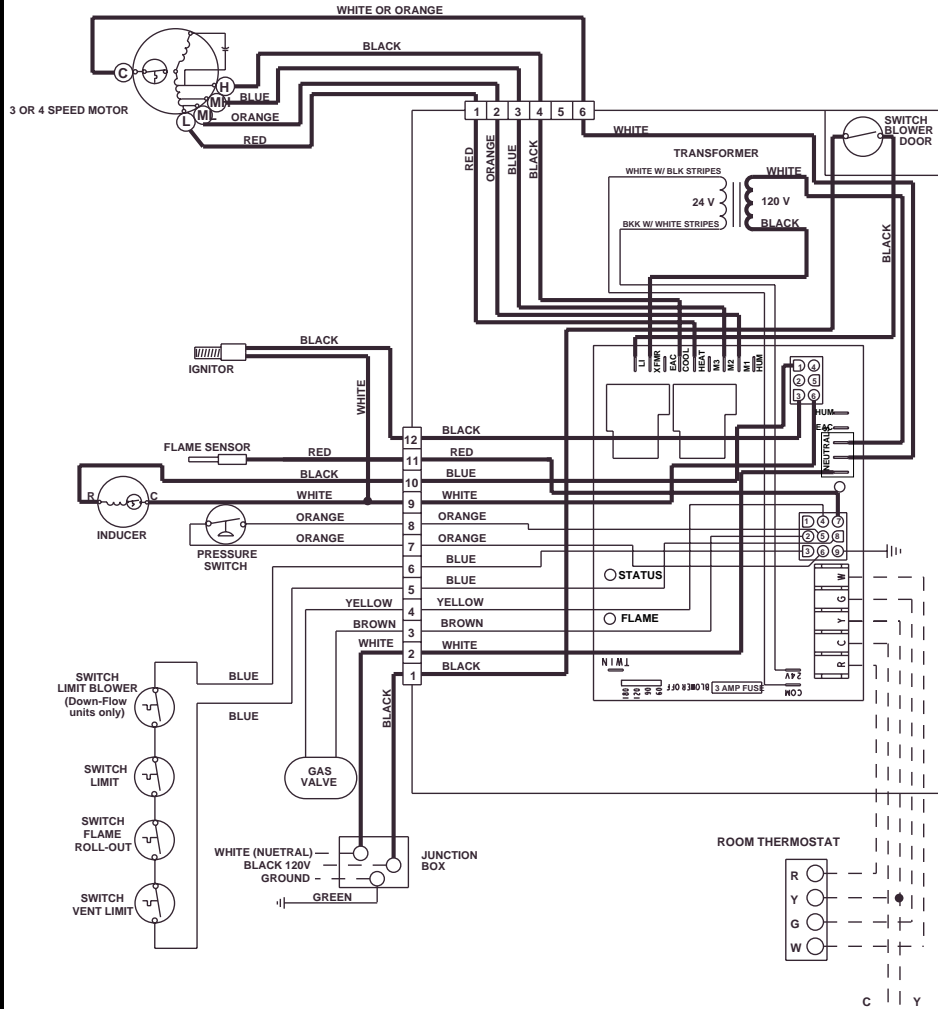


WIRING DIAGRAM

For Models G(3,4)R(-) Gas Furnaces with UTEC Control Board #624631



FAULT CONDITION	STATUS RED LIGHT
Power On	ON
Limit Circuit Open	1 FLASH
Pressure Switch Stuck Open	2 FLASHES
Pressure Switch Stuck Closed	3 FLASHES
Ignition Failure (Check Ground)	4 FLASHES
115 VAC & Neutral Reversed or no Ground	5 FLASHES
False Flame or Gas Valve Relay Shorted	Continuous
Power Off	OFF
FAULT CONDITION	FLAME YELLOW LIGHT
Low Flame Sensor Signal	Continuous Flash
Flame Present	ON

If any of the original wire as supplied with the furnace must be replaced, it must be replaced with wiring material having a temperature rating of at least 105 C.

Legend

Field Wiring	---
Factory Wiring:	
Low Voltage	—
High Voltage	—

703799A (Replaces 7037990)