

# NORTEK GLOBAL HVAC, LLC

## **Wired Remote Controller WRC3 and Wireless Remote Controller WLRC3**

Owner's Manual / Installation Instructions

Commercial Air Conditioners

Please read this owner's manual carefully before operation and retain for future reference. Specifications & illustrations subject to change without notice or incurring obligations. If you have lost the owner's manual, please visit [www.NortekHVAC.com](http://www.NortekHVAC.com) for electronic version.

## User Notice

- ◆ Do not install remote controller in humid environment. Avoid exposure to direct sunlight.
- ◆ Do not throw, drop, or mishandle remote controller.
- ◆ Do not operate remote controller with wet hands.



**Please read the manual carefully before using and installing this product.**

Children and persons with reduced mental, sensory or physical capabilities should not be allowed to operate or maintain this equipment.

If the power cord is damaged, it must be replaced by a new cord that meets the same standards as the original. It must be installed by a qualified professional. Failure to comply could result in damage to the equipment or cause a fire. This product must not be disposed other household waste. Please dispose of properly.

# Contents

I	Wired Remote Controller WRC3	1
1	Symbols on LCD	1
1.1	Outside View of the Wired Remote Controller	1
1.2	LCD of the Wired Remote Controller	1
2	Buttons	2
2.1	Buttons on the Wired Remote Controller	2
2.2	Function of the Buttons	3
3	Operation Instructions	4
3.1	On/Off	4
3.2	Mode Setting	4
3.3	Temperature Setting	4
3.4	Fan Setting	5
3.5	Timer Setting	6
3.6	Swing Setting	7
3.7	Sleep Setting	8
3.8	Turbo Setting	9
3.9	E-heater Setting	10
3.10	Blow Setting	11
3.11	Other Functions	12
4	Installation and Dismantlement	13
4.1	Connection of the Signal Line of the Wired Remote Controller	13
4.2	Installation of the Wired Remote Controller	13
4.3	Dismantlement of the Wired Remote Controller	15
5	Errors Display	15
II	Wireless Remote Controller WLRC3	17
1	Function of Press Buttons	17
2	Guide for General Operation	19
3	Guide for Optional Operation	20



# I Wired Remote Controller WRC3

## 1 Symbols on LCD

### 1.1 Outside View of the Wired Remote Controller

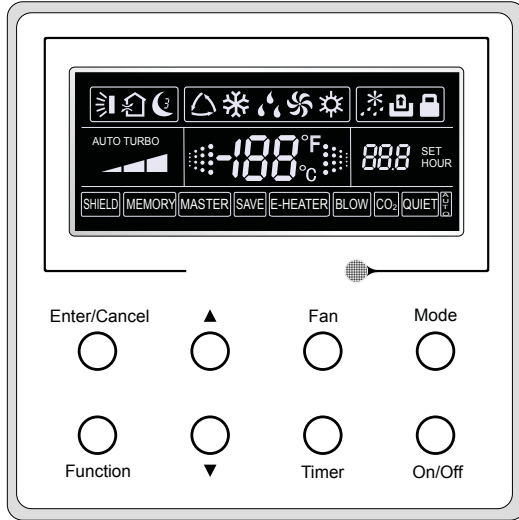


Fig. 1 Outside View of the Wired Remote Controller

### 1.2 LCD of the Wired Remote Controller

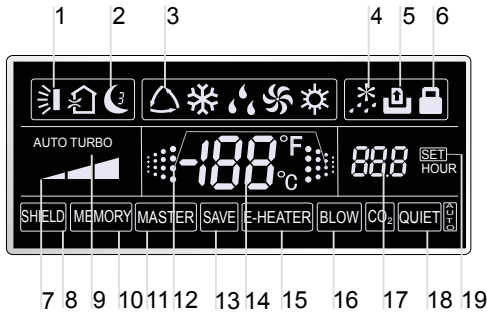


Fig. 2 LCD of the Wired Remote Controller

Table 1

No.	Symbols	Description
1		Swing function.
2		Sleep function (Only sleep 1).
3		Running modes of the indoor unit (Cooling, Dry, Fan and Heating).
4		Defrosting function for the outdoor unit.
5		Gate-control function (this function is yet unavailable for this unit).
6		Lock function.
7		High, middle, low or auto fan speed of the indoor unit.
8		Shield functions (buttons, temperature, On/Off or Mode is shielded by the remote monitor).
9		Turbo function.
10		Memory function (The indoor unit resumes the original setting state after power failure and then power recovery).
11		Master wired remote controller (this function is yet unavailable for this unit).
12		It blinks under on state of the unit without operation of any button.
13		Energy-saving function (this function is yet unavailable for this unit).
14		Ambient/preset temperature value.
15		Electric auxiliary heating function.
16		Blow function.
17		Timing value.
18		Quiet function (two types: quiet and auto quiet) (this function is yet unavailable for this unit).
19	SET	It will be displayed under the debugging mode.

## 2 Buttons

### 2.1 Buttons on the Wired Remote Controller

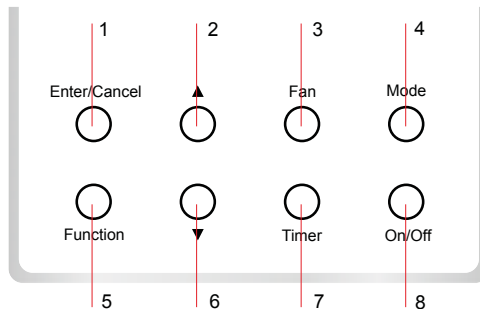

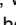


Fig. 3 Buttons on the Wired Remote Controller

## 2.2 Function of the Buttons

Table 2

No.	Name	Function
1	Enter/Cancel	Function selection and cancellation.
2	▲	① Running temperature setting of the indoor unit, range:16 ~ 30℃ . ② Timer setting, range:0.5-24 hr.
6	▼	
3	Fan	Setting of the high/middle/low/auto fan speed.
4	Mode	Setting of the Cooling/Heating/Fan/Dry/Auto mode of the indoor unit.
5	Function	Switchover among the functions of Turbo/Save/E-heater/Blow etc.
7	Timer	Timer setting.
8	On/Off	Turn on/off the indoor unit.
4+2	▲+Mode	Press and hold for 5s under off state of the unit to Enter/Cancel the Memory function(If memory is set, indoor unit after power failure and then power recovery will resume the original setting state. If not, the indoor unit is defaulted to be off after power recovery. Memory off is default before delivery.).
3 +6	Fan+▼	By pressing them at the same time under off state of the unit,  will be displayed on the wired remote controller for the cooling only unit, while  will be displayed on the wired remote controller for the cooling and heating unit.
2 +6	▲+▼	After successful startup or under off state of the unit,press and hold both keys for 5s to enter the lock state, in which case, any other buttons won't respond. Repress and hold both keys for 5s to quit this state.
4+6	Mode+▼	Under OFF state, the Celsius and Fahrenheit scales can be switched by pressing "Mode" and "▼" for five seconds.
5+7	Function+Timer	Under OFF state, you can select commissioning status by pressing "Function" and "Timer" for five seconds. If "00" is not shown on the temperature display, continue to press "Mode" until it appears. Then adjust the options which is shown on the timer area by pressing "▲" and "▼". There are four options, as follows: ① Indoor ambient temperature is sensed by the return air temperature sensor ( 01 displayed on the timer area). ② Indoor ambient temperature is sensed by the wired controller (02 displayed on the timer area). ③ The return air temperature sensor is selected under the cooling, dry, or fan mode; while the wired controller temperature sensor is selected under the heating or auto mode. (03 is displayed on the timer area). ④ The wired controller temperature sensor is selected under the cooling, dry, or fan mode; while the return air temperature sensor is selected under the heating mode. (04 is displayed on the timer display area).
5+7	Function+Timer	Under OFF state, you can select commissioning status by pressing "Function" and "Timer" for five seconds. Press "Mode" button to until "01" icon is shown at the temperature display area. The setting status will be shown at timer area. Press "▲" and "▼" button to adjust and two options are available: ① Three low levels (01) ; ② Three high levels (02).

### 3 Operation Instructions

#### 3.1 On/Off

Press On/Off to turn on the unit and turn it off by another press.

Note: The state shown in Fig.4 indicates the “Off” state of the unit after power on. The state shown in Fig.5 indicates the “On” state of the unit after power on.

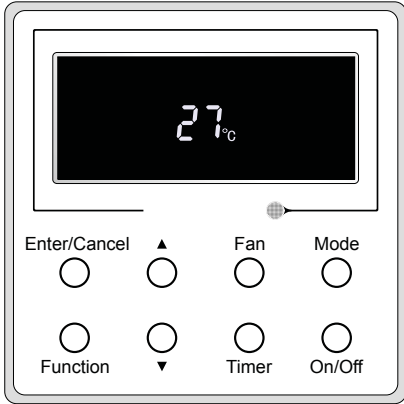


Fig. 4 “Off” State

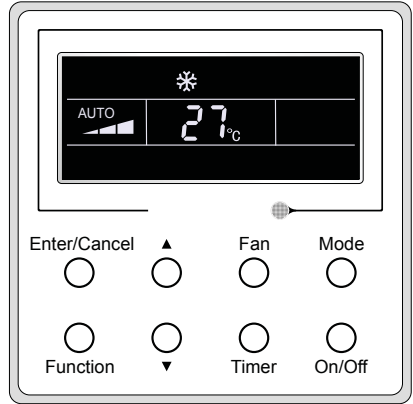
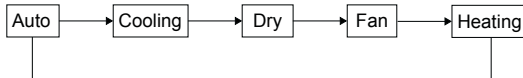


Fig. 5 “On” State

#### 3.2 Mode Setting

Under the “On” state of the unit, press Mode to switch the operation modes as the following sequence: Auto-Cooling-Dry-Fan-Heating.



#### 3.3 Temperature Setting

Press ▲ or ▼ to increase/decrease the preset temperature. Press and hold either button, and the temperature will be increased or decreased by 1°C every 0.5s, as shown in Fig. 6.

In the Cooling, Dry, Fan or Heating mode, the temperature setting range is 16°C ~ 30°C .

In the Auto mode, the setting temperature is not adjustable.



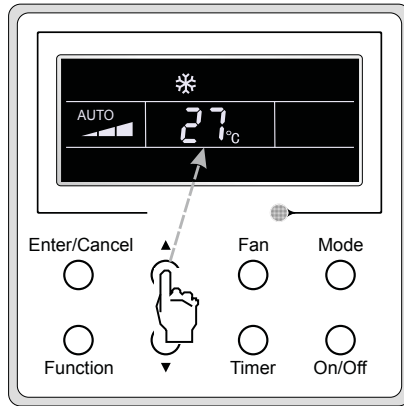


Fig. 6

### 3.4 Fan Setting

Under the "On"/"Off" state of the unit, press Fan and then fan speed of the indoor unit will change circularly as shown in Fig. 7.

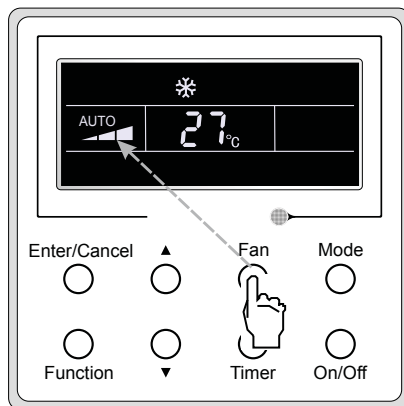
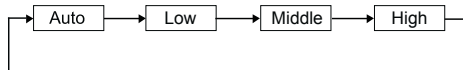


Fig. 7

### 3.5 Timer Setting

Under the “On”/”Off” state of the unit, press Timer to set timer off/on.

Timer on setting: press Timer, LCD will display “xx.x hour”, with “hour” blinking. In this case, press ▲ or ▼ to adjust the timing value. Then press Enter/Cancel to confirm the setting.

Timer off setting: press Timer, LCD timer display will disappear.

Timer off setting under the “On” state of the unit is shown as Fig. 8.

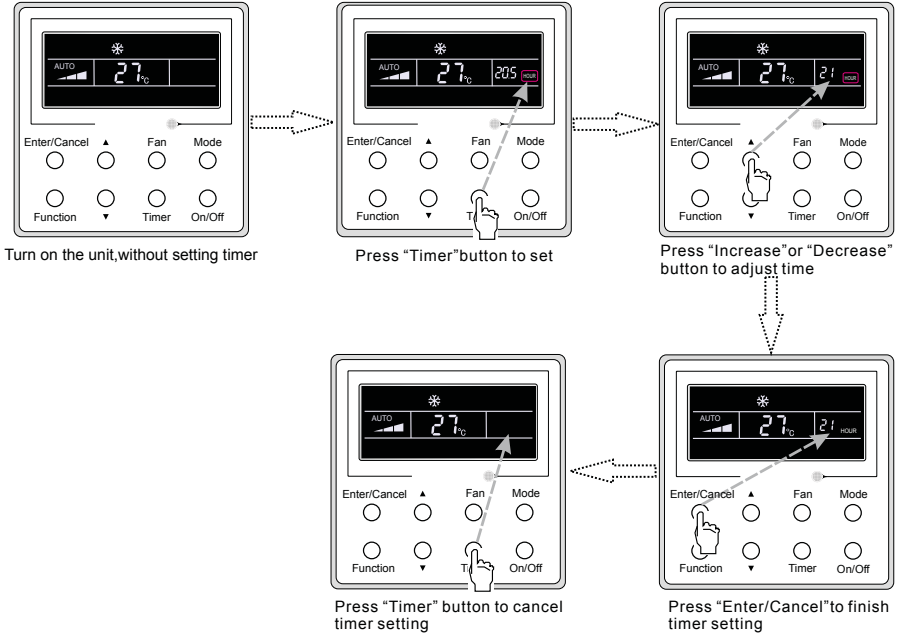




Fig. 8 Timer off Setting under the “On” State of the Unit

Timer range: 0.5-24hr. Every press of ▲ or ▼ will make the set time increased or decreased by 0.5hr. If either of them is pressed continuously, the set time will increase/ decrease by 0.5hr every 0.5s.

### 3.6 Swing Setting

Swing On: Press Function under on state of the unit to activate the swing function. In this case,  will blink. After that, press Enter/Cancel to make a confirmation.

Swing Off: When the Swing function is on, press Function to enter the Swing setting interface, with  blinking. After that, press Enter/Cancel to cancel this function.

Swing setting is shown as Fig. 9.

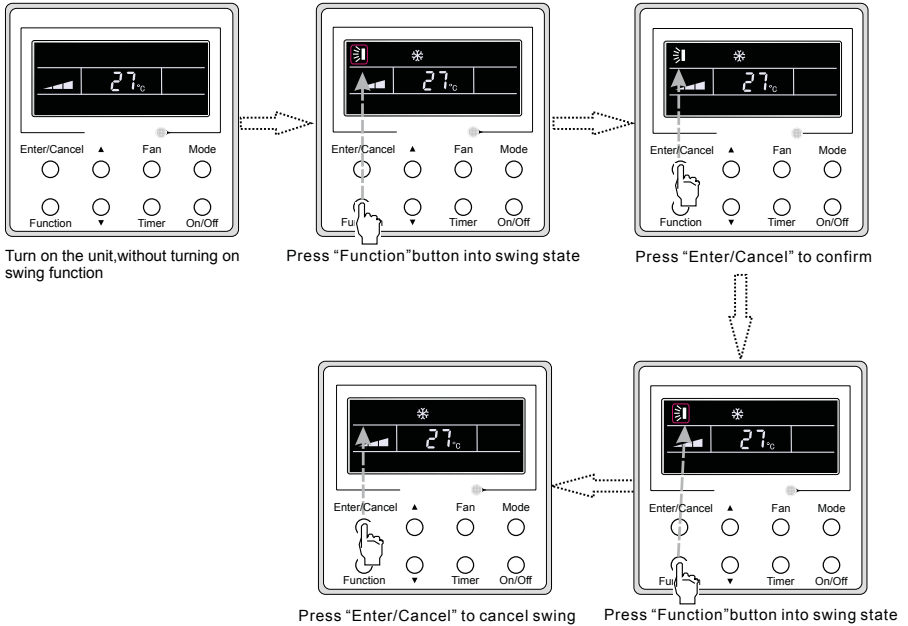


Fig. 9 Swing Setting

Note:

- ① . Sleep, Turbo or Blow functions are engaged the same as the Swing setting.
- ② . After selecting the desired setting, press the "Enter/Cancel" button within 5 seconds to confirm.

## 3.7 Sleep Setting

**Sleep on:** Press Function under on state of the unit till the unit enters the Sleep setting interface. Press Enter/Cancel to confirm the setting.

**Sleep off:** When the Sleep function is activated, press Function to enter the Sleep setting interface. After that, press Enter/Cancel to cancel this function.

In the Cooling or Dry mode, the temperature will increase by 1°C after the unit runs under Sleep 1 for 1hr and 1°C after another 1hr. After that, the unit will run at this temperature.

In the Heating mode, the temperature will decrease by 1°C after the unit runs under Sleep 1 for 1hr and 1°C after another 1hr. After that, the unit will run at this temperature.

Sleep setting is shown as Fig. 10.

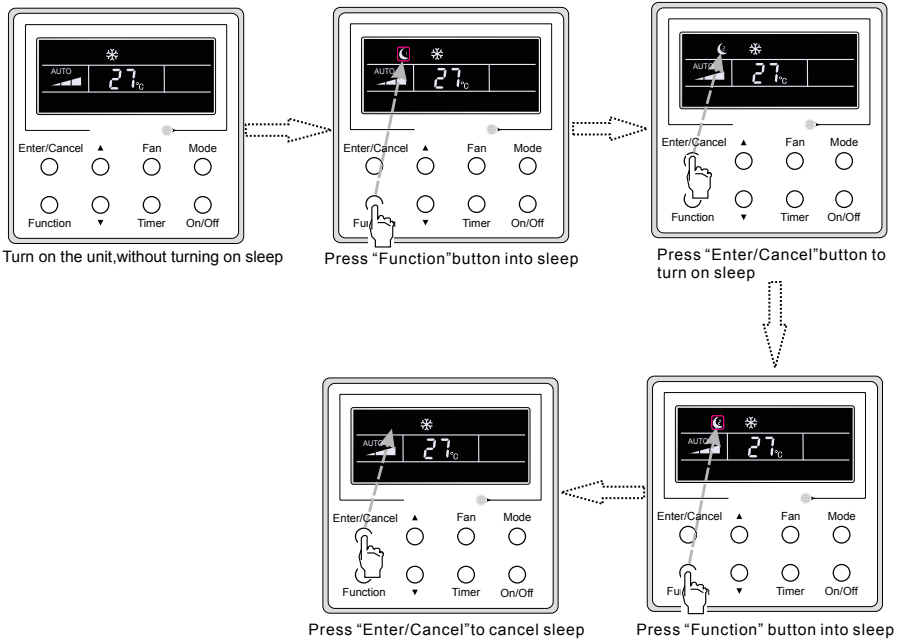


Fig. 10 Sleep Setting

### 3.8 Turbo Setting

Turbo function: The system can run at high fan speed to more quickly heat/cool the room to the desired temperature.

In the Cooling or Heating mode, press Function till the unit enters the Turbo setting interface and then press Enter/Cancel to confirm the setting.

When the Turbo function is activated, press Function to enter the Turbo setting interface and then press Enter/Cancel to cancel this function.

Turbo function setting is as shown in Fig. 11.

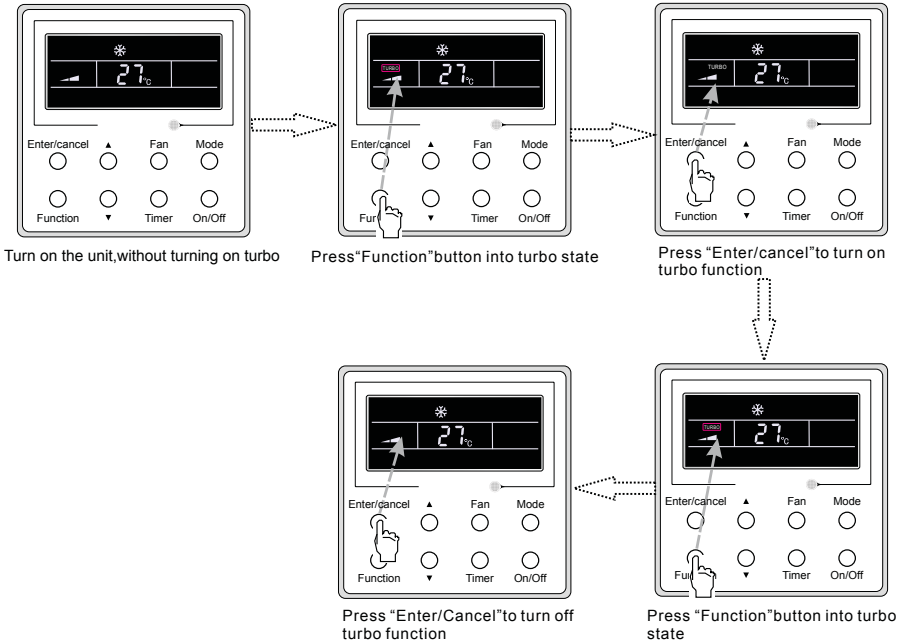


Fig. 11 Turbo Setting

## 3.9 E-heater Setting

E-heater (auxiliary electric heating function): In the Heating mode, E-heater is allowed to be turned on for improvement of efficiency.

Once the wired remote controller or the remote controller enters the Heating mode, this function will be turned on automatically.

Press Function in the Heating mode to enter the E-heater setting interface and then press Enter/Cancel to cancel this function.

Press Function to enter the E-heater setting interface, if the E-heater function is not activated, and then press Enter/Cancel to turn it on.

The setting of this function is shown as Fig. 12 below:

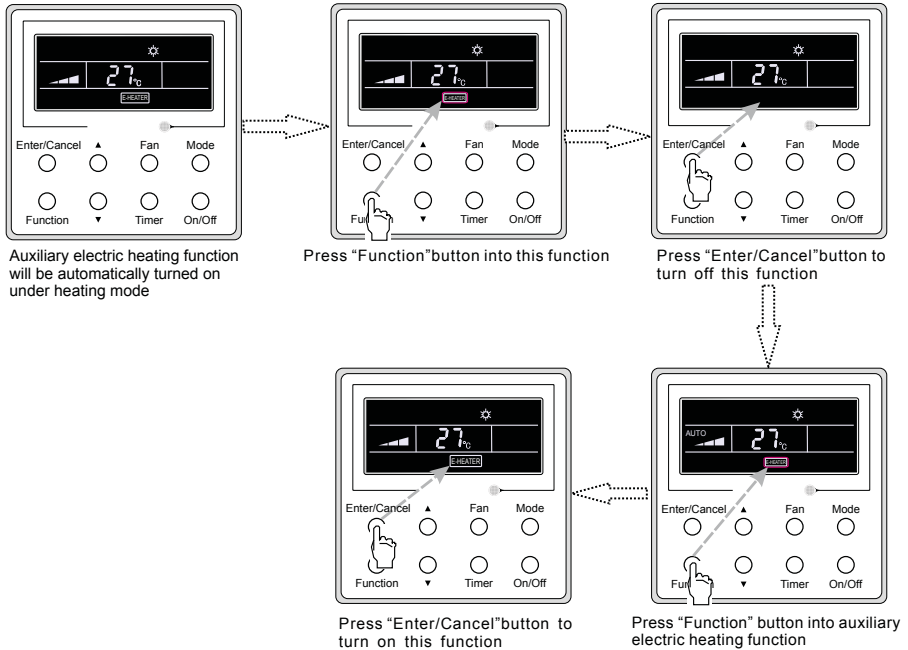


Fig. 12 E-heater Setting

### 3.10 Blow Setting

Blow function: After unit cycles off, the blower will continue to run for 2 minutes to evaporate any moisture that has condensed on the indoor coil. Drying the indoor coil avoids mildew.

In the Cooling or Dry mode, press Function till the unit enters the Blow setting interface and then press Enter/Cancel to activate this function.

When the Blow function is activated, press Function to the Blow setting interface and then press Enter/Cancel to cancel this function.

Blow function setting is as shown in Fig. 13

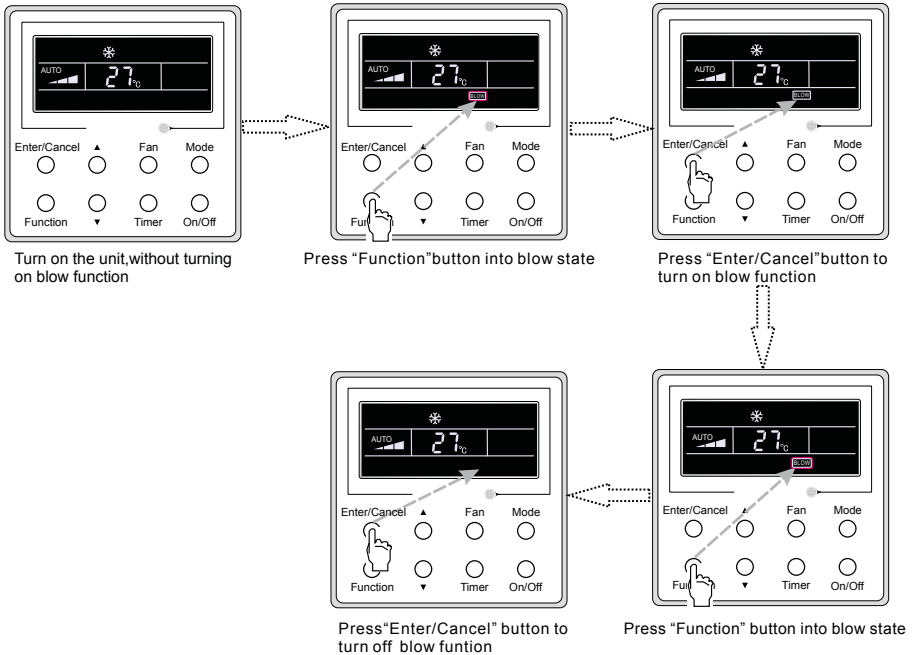


Fig. 13 Blow Setting


Notes:

① . When the Blow function is activated, after turning off the the system by pressing On/ Off on the unit or remote controller, the indoor fan will run at the low fan speed for 2 min, with "BLOW" displayed on the LCD. While in Blow mode, if function is cancelled, the blower will turn off immediately.

② . Blow function is unavailable in the Fan or Heating mode.

### 3.11 Other Functions

#### (1). Lock

After successful startup or under the "Off" state of the unit, press ▲ and ▼ at the same time for 5s till the wired remote controller enters the Lock function. In this case, LCD displays . After that, repress these two buttons at the same time for 5s to quit this function.

Under the Lock state, any other button press won't get any response.

#### (2). Memory

Memory switchover: Under the "Off" state of the unit, press Mode and ▲ at the same time for 5s to switch memory states between memory on and memory off. When this function is activated, Memory will be displayed. If this function is not set, the unit will be under the "Off" state after power failure and then power recovery.

Memory recovery: If this function has been set after power failure the remote controller will resume its original running state upon power recovery. Memory contents: On/Off, Mode, set temperature, set fan speed and Lock function.

#### (3). Selection of the Temperature Sensor

Under OFF state of the unit, press both "Function" and "Timer" for five seconds to go the commissioning status. Under this status, adjust the display in the temperature display area to "00" through the button "Mode", and then adjust the option of the temperature sensor in the timer display area through the button ▲ or ▼.

- ① . Indoor ambient temperature is sensed at the return air inlet(01 in the timer display area).
- ② . Indoor ambient temperature is the sensed at the wired controller(02 in the timer display area).
- ③ . Select the temperature sensor at the return air inlet under the cooling, dry and fan modes, while select the temperature sensor at the wired controller under the heating and auto modes.(03 in the timer display area).
- ④ . Select the temperature sensor at the wired controller under the cooling, dry and fan modes, and select the temperature sensor at the return air inlet under the heating mode and auto modes (04 displayed in the timer display area).

The factory defaulted setting is ③ .

After the setting, press "Enter/Cancel" to make a confirmation and quit this setting status.

Pressing the button "On/Off" also can quit this commissioning status but the set data won't be saved.

Under the commissioning status, if there is no any operation in 20 seconds after the last button press, it will revert to the previous state without saving the current data.

#### (4). Selection of the Fan Speed

Under OFF state of the unit, press both the buttons "Function" and "Timer" for five seconds to go to the commissioning status, and then adjust the display in the temperature display area to 01 through the button "Mode" and adjust the setting of the fan speed, which comes to two options.

01: Three low fan speeds; 02: Three high fan speeds

After the setting, press "Enter/Cancel" to make a confirmation and quit this setting status.

Pressing the button "On/Off" also can quit this commissioning status but the set data won't be saved.

Under the commissioning status, if there is no any operation in 20 seconds after the last button press, it will revert to the previous state without saving the current data.



## 4 Installation and Dismantlement

### 4.1 Connection of the Signal Line of the Wired Remote Controller

- Open the cover of the electric control box of the indoor unit.
- Lead the single line of the wired remote controller through the rubber ring.
- Connect the signal line of the wired remote controller to the 4-pin socket of the indoor unit PCB.
- Tighten the signal wire with ties.
- The communication distance between the main board and the wired remote controller can be up to 20 meters ( the standard distance is 8 meters)

### 4.2 Installation of the Wired Remote Controller

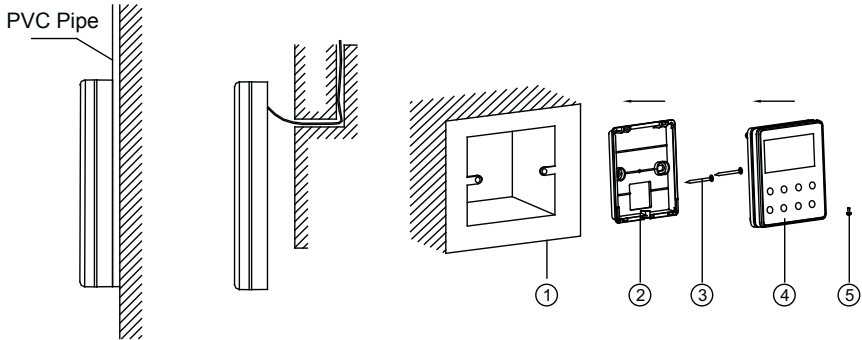


Fig. 14 Accessories for the Installation of the Wired Remote Controller

Table 3

No.	1	2	3	4	5
Name	Socket box embedded in the wall	Soleplate of the Wired Remote Controller	Screw M4X25	Front Panel of the Wired Remote Controller	Screw ST2.9X6

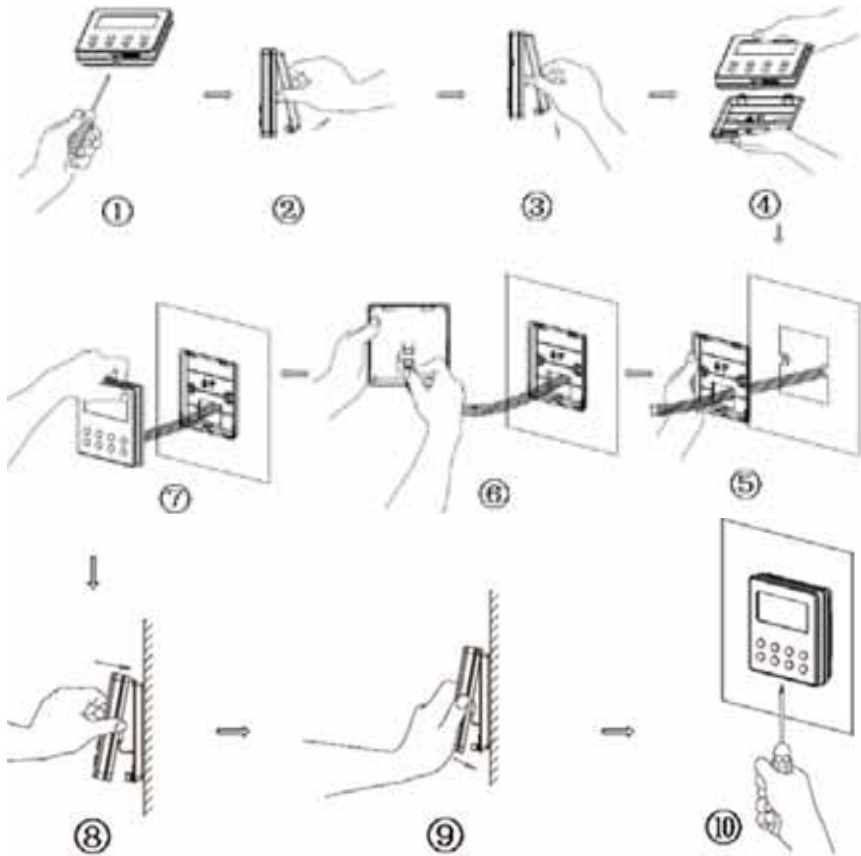


Fig.15

Fig. 15 shows the installation steps of the wired remote controller, but there are some issues that need your attention.

- (1). Prior to the installation, please turn off power supply to the wired controller.
- (2). Pull out the four-core twisted pair line from the installation holes and then lead it through the rectangular hole behind the soleplate of the wired remote controller.
- (3). Stick the soleplate of the wired remote controller to the wall over the installation hole and then fix it with screws M4X25.
- (4). Insert the four-core twisted pair line into the slot of the wired remote controller and then buckle the front panel and the soleplate of the wired remote controller together.
- (5). Finally, fix the front panel and the soleplate of the wired remote controller tightly by screws ST2.9X6.

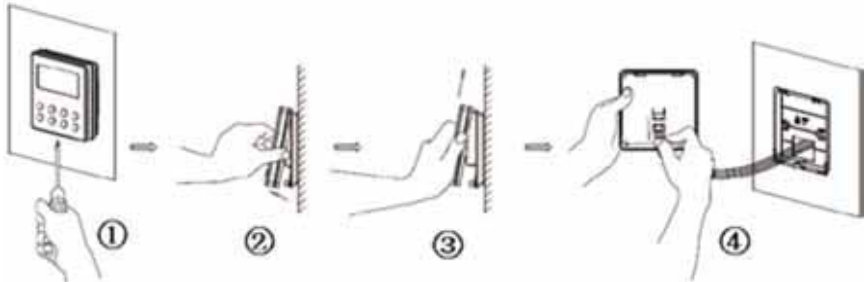
**⚠ CAUTION!**

Please pay special attention to the followings during the connection to avoid malfunction of the air conditioning unit due to electromagnetic interference.

① . Separate the signal and communication lines of the wired remote controller from the power cord and connection lines between the indoor and outdoor unit, with a minimum interval of 20cm.

② . If the air conditioning unit is installed where is subject to electromagnetic interference, then the signal and communication lines of the wired remote controller must be shielded.

### 4.3 Dismantlement of the Wired Remote Controller



## 5 Errors Display

If an error occurs during operation of the system, the error code will be displayed on the LCD, as show in Fig. 16. If multiple errors occur at the same time, their codes will be displayed circularly.

**Note:** In event of any error, please turn off the unit and contact the professionally skilled personnel.

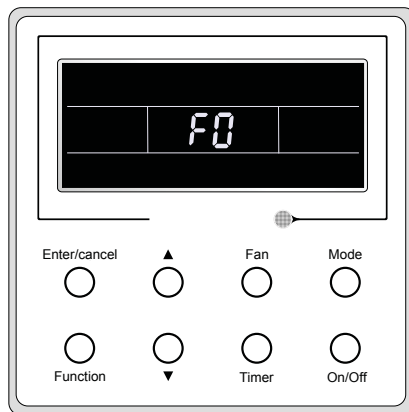


Fig. 16

Table 4 Meaning of Each Error

Error	Error Code	Error	Error Code
Return air temperature sensor open/short circuited	F1	Drive board communication error	P6
Evaporator temperature sensor open/short circuited	F2	Compressor overheating protection	H3
Indoor unit liquid valve temperature sensor open/short circuited	b5	Indoor and outdoor units unmatched	LP
Indoor gas valve temperature sensor open/short circuited	b7	Communication line misconnected or expansion valve error	dn
IPM temperature sensor open/short circuited	P7	Running mode conflict	E7
Outdoor ambient temperature sensor open/short circuited	F3	Pump-down	Fo
Outdoor unit condenser mid-tube temperature sensor open/short circuited	F4	Defrost or oil return	
Discharge temperature sensor open/short circuited	F5	Forced defrosting	H1
Indoor and outdoor communication error	E6	Compressor startup failure	Lc
DC bus under-voltage protection	PL	High discharge temperature protection	E4
DC bus over-voltage protection	PH	Overload protection	E8
Compressor phase current sensing circuit error	U1	Whole unit over-current protection	E5
Compressor demagnetization protection	HE	Over phase current protection	P5
PFC protection	Hc	Compressor desynchronizing	H7
IPM Temperature Protection	P8	IPM Current protection	H5
Over-power protection	L9	Compressor phase loss/reversal protection	Ld
System charge shortage or blockage protection	F0	Frequency restricted/reduced with whole unit current protection	F8
Capacitor charging error	PU	Frequency restricted/reduced with IPM current protection	En
High pressure protection	E1	Frequency restricted/reduced with high discharge temperature	F9
Low pressure protection	E3	Frequency restricted/reduced with anti-freezing protection	FH
Compressor stalling	LE	Frequency restricted/reduced with overload protection	F6
Over-speeding	LF	Frequency restricted/reduced with IPM temperature protection	EU
Drive board temperature sensor error	PF	Indoor unit full water error	E9
AC contactor protection	P9	Anti-freezing protection	E2
Temperature drift protection	PE	AC input voltage abnormal	PP
Sensor connection protection	Pd	Whole unit current sensing circuit error	U5
DC bus voltage drop error	U3	4-way valve reversing error	U7
Outdoor fan 1 error protection	L3	Motor stalling	H6
Outdoor fan 2 error protection	LA	PG motor zero-crossing protection	U8

## II Wireless Remote Controller WLRC3

### Notes:

- ① . Be sure that there are no obstructions between the receiver and the remote controller;
- ② . Do not drop or throw the remote controller;
- ③ . Do not let any liquid into the remote controller or expose the remote controller to direct sunlight or extreme heat.
- ④ . This is a general use remote controller. If you press a button for a function not available with the equipment, the unit will keep the original running status.

### 1 Function of Press Buttons



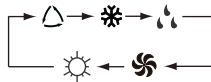
Fig.17






#### 1) ON/OFF (⏻)

Press this button to turn on/off the unit. After that, the sleep function will be canceled but the preset time is still remained.

#### 2) MODE

Auto, Cool, Dry, Fan, Heat modes can be selected circularly by pressing this button. Auto mode is the default. Under Auto mode, the temperature will not be displayed. Under Heat mode, the initial value is 28°C (82 °F ); Under other modes, the initial value is 25°C (77 °F ).



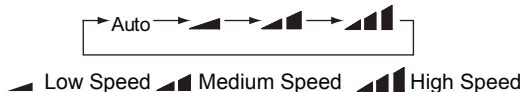
-  Auto
-  Cool
-  Dry
-  Fan
-  Heat(Only for the cooling and heating unit)

### 3) SLEEP

Sleep On and Sleep Off can be selected by pressing this button. After powered on, the default is Sleep Off. After the unit is turned off, the Sleep function is canceled. When the sleep function is set already, the symbol ☾ will be displayed. And at this time, the timer can be adjusted. Under Fan and Auto modes, this function is not available.

### 4) FAN

Auto, Low, Medium, or High fan speed can circularly selected by pressing this button. After powered on, the default is Auto speed. Under Dehumidifying mode, only Low fan speed is available.



### 5) CLOCK

The clock can be set up by pressing this button, with the symbol ⊕ displayed and blinking. In such a case, pressing + or - within 5 seconds to adjust the value. If the button is pressed down for more than 2 seconds, the value on ten's place will increase by 1 in every 0.5 seconds. After that, repressing this button and then symbol ⊕ stops blinking, which indicates the setting is saved. After powered on, the default value is 12:00 with ⊕ displayed. Once the symbol ⊕ is displayed, the current time is the Clock value; otherwise it is the Timer value.

### 6) LIGHT

Light On and Light Off can be set by pressing this button when the unit is at On or Off status. After powered on, the default is Light On.

### 7) TURBO

In Cool or Heat mode, pressing this button can activate or deactivate this function. When this function is on, its symbol will be displayed. Any change of either mode or fan speed will make this function canceled automatically.

### 8) X-FAN

Pressing X-FAN button in COOL or DRY mode, the icon ☼ is displayed and the indoor fan will continue operation for 10 minutes in order to dry the indoor unit even though you have turned it off.

After energization, X-FAN OFF is the default setting. X-FAN is not available in AUTO, FAN or HEAT mode.

### 9) -


The preset temperature can be decreased by pressing this button. If the button is pressed down for more than 2 seconds, the temperature will be decreased quickly until it is released, with °C ( °F ) displayed. Under Auto mode, the temperature adjustment is unavailable.

### 10) +

The preset temperature can be increased by pressing this button. If the button is pressed down for more than 2 seconds, the temperature will be increased quickly until it is released, with °C ( °F ) displayed. Under Auto mode, the temperature adjustment is unavailable. The setting range is 16-30 °C or 61-86 °F

### 11) TEMP



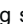

It can be selected by pressing this button which temperature will be displayed, indoor set temperature, or indoor ambient temperature. When the indoor unit is powered on, the indoor set

temperature will be displayed, if the status is changed to , the indoor ambient temperature will be displayed. However, the indoor set temperature will be displayed again when the controller receives other remote controls signals. Without setting this function, the default is the indoor set temperature.


## 12) SWING UP/DOWN ()

The swing angle which circularly changes as below can be selected by pressing this button:



This kind of remoter controller is universal. And the three swing statuses of , ,  are the same as that of .

If the swing function is deactivated when the air guide louver is swing up and down, it will stop at the current position.

 indicates that the air guide louver swings up and down among all five positions.

## 13) AIR ()

AIR ON or Air OFF can be selected by pressing this button.

## 14) TIMER ON

“ON” will be displayed and blink for 5 seconds by pressing this button. Adjust the time by pressing + or – within 5 seconds. Each press will make the time increased or decreased by 1 minute. If the button is pressed down for more than 2 seconds, the time will be changed quickly such that: firstly the value on the one’s place is changed and then is the value on the ten’s place. Once Timer ON has been set, it can be canceled by repressing it. Please set the CLOCK to the actual time before setting the TIMER..

## 15) TIMER OFF

TIMER OFF can be activated by pressing this button, with “OFF” blinking. The method of setting is the same as that for TIMER ON.


## 16) HEALTH ()

This function can be activated or deactivated by pressing this button. After the unit is turned on, the default is HEALTH ON.

## 17) I FEEL

This function can be activated by pressing this button and canceled by another press. When this function is on, the I FEEL information will be sent out in 200ms after each operation on the controller and the remote controller will send the temperature information to the main controller every 10 minutes.

## 2 Guide for General Operation

- After powered on, press ON/OFF and then the unit will start to run. (Note: when powered off, the guide louver of the main unit will close automatically).
- Press MODE to select the desired running mode.
- Press + or – to set the desired temperature (it is unnecessary to set the temperature under the AUTO mode.)
- Press FAN to set the fan speed, Auto, Low, Medium, or High.
- Press  to select the swing angle.

### 3 Guide for Optional Operation

#### a. About X-FAN

This function indicates that moisture in the evaporator of the indoor unit will be dried after the unit is stopped to avoid mould.

① . X-FAN ON: When press the ON/OFF button to turn off the unit, the indoor fan will continue running for about another 10 minutes at the low speed. In this case, the indoor fan can be stopped directly by pressing the button X-FAN.

② . X-FAN OFF: When press the ON/OFF button to turn off the unit, the whole unit will be stopped completely.

#### b. About AFTERHEAT X-FAN

Under the Heat mode or Auto Heat mode, if the unit is turned off, the compressor and outdoor fan will stop running immediately and the upper and lower guide board will rotate to the horizontal position, while the indoor fan will still run at the low fan speed. Then, 10 seconds later, the unit will stop completely.

#### c. About AUTO RUN

When AUTO RUN is selected, the setting temperature will not be displayed on the LCD and the unit will choose the suitable running mode automatically in accordance with the room temperature.

#### d. About TURBO

If this function is activated, the unit will run at super-high fan speed to cool or heat quickly so that the ambient temperature will approaches the preset temperature as soon as possible.

Specifications & illustrations subject to change without notice or incurring obligations.  
O'Fallon, MO (08/16) © Nortek Global HVAC, LLC 2016. All Rights Reserved. 493E-0816

