

## RELAY REWORK INSTRUCTIONS

### Single Package Gas Heating / Electric Cooling

1. Turn off all power to the unit. Verify there is no voltage to the unit with a multimeter.
2. Remove the #8 Brown wire from the existing relay and add the brown 4" extension wire.
3. Remove the #12 Black wire from the existing relay and add the black 4" extension wire.

Diagram of existing relay noting the wire numbers in steps #2 and #3.

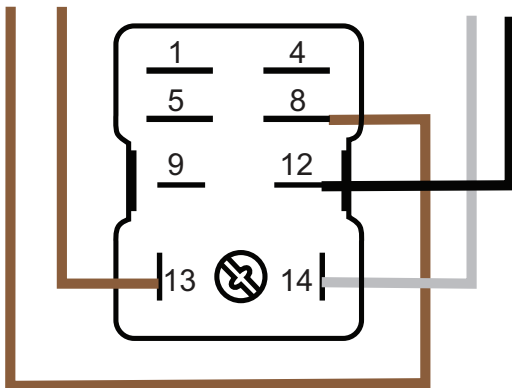
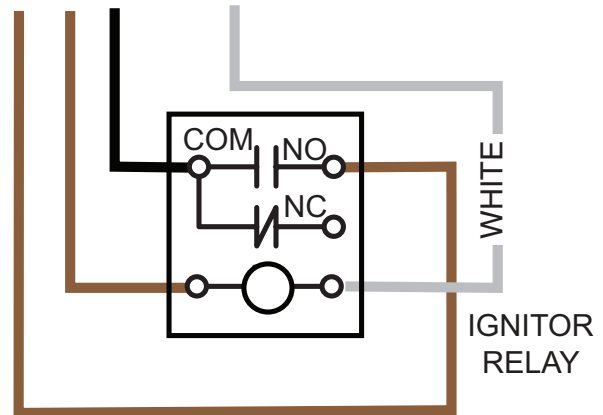


Diagram of New relay and wiring



11. Note: the "NC" on this relay is unused.
12. Ensure the wiring is per the wiring diagram with this document.
13. Apply power to the unit and verify the heating cycle.

4. Remove the #13 and #14 wire from the existing relay and let them hang until step 11.
5. Remove the existing relay.
6. A new hole will have to be drilled 1.7" from the bottom hole to accommodate the new relay.
7. Attach the new relay part number 622180 to the control panel.
8. Attach the Brown wire with the brown extension wire to "NO" on the relay.
9. Attach the Black wire with the black extension wire to the "COM" on the relay.
10. Attach the Brown and white coil relay terminals. These have smaller 3/16" terminals and cannot be placed on any other connection points.

# WIRING DIAGRAM

## Packaged Ultra Low NOx Single Stage Gas Heat/Electric Air Conditioner

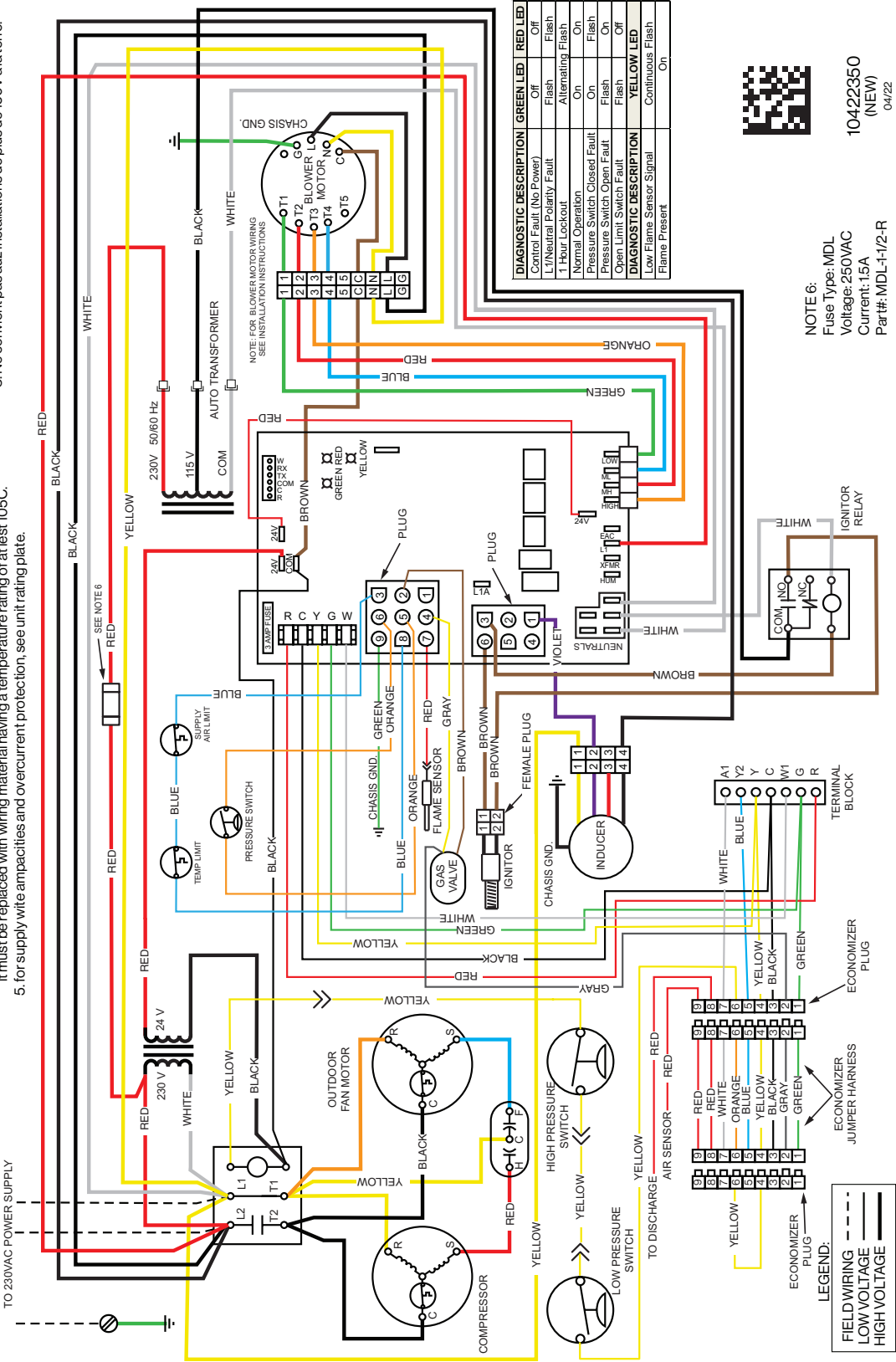
230 Volt

Single Phase

60Hz

### NOTES:

1. Disconnect all power before servicing.
2. For supply connection use copper conductors only.
3. Not suitable on systems that exceed 150V to ground.
4. If any of the original wire as supplied with the furnace must be replaced, it must be replaced with wiring material having a temperature rating of at least 105C.
5. For supply wire ampacities and overcurrent protection, see unit rating plate.
1. Couper le courant abantaire letretien.
2. Employez uniquement des conducteurs en cuivre.
3. Ne convient pas aux installations de plus de 150V a la terre.



NOTE 6:  
Fuse Type: MDL  
Voltage: 250VAC  
Current: 15A  
Part#: MDL-1/2-R

LEGEND:  
FIELD WIRING  
LOW VOLTAGE  
HIGH VOLTAGE

10422350  
(NEW)  
04/22