

INSTALLATION INSTRUCTIONS

Outdoor Thermostat Field Installation for 13 & 14 SEER Heat Pumps

IMPORTANT SAFETY INFORMATION

INSTALLER: Please read all instructions before servicing this equipment. Pay attention to all safety warnings and any other special notes highlighted in the manual. Safety markings are used frequently throughout this manual to designate a degree or level of seriousness and should not be ignored. **WARNING** indicates a potentially hazardous situation that if not avoided, could result in personal injury or death.

WARNING:

ELECTRICAL SHOCK, FIRE OR EXPLOSION HAZARD

Failure to follow safety warnings exactly could result in serious injury or property damage.

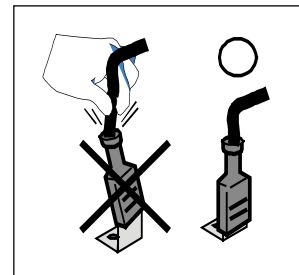
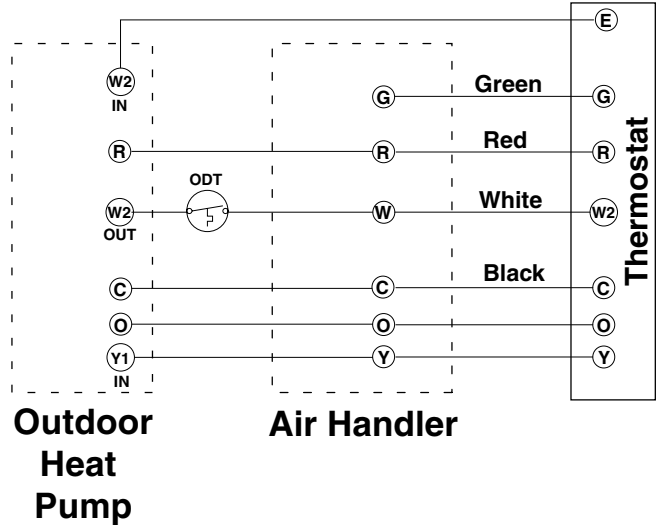
Improper servicing could result in dangerous operation, serious injury, death or property damage.

- Before servicing, disconnect all electrical power to the unit.
 - When servicing controls, label all wires prior to disconnecting. Reconnect wires correctly.
 - Verify proper operation after servicing.
-

14 SEER HEAT PUMPS

The instructions listed below describe how to properly install the outdoor thermostat on 14 SEER heat pumps.

1. Use a wire with ¼" Quick Connect receptacle terminal on one end and stripped wire at the other end, cut to a 5" length. Connect the QC terminal to the Outdoor Thermostat (ODT) and, using a wire nut, connect the stripped end of the wire to the black wire connected to the W2 OUT terminal on the Defrost Board.
2. Place a ¼" Quick Connect receptacle terminal to the field thermostat wire W from the Air Handler. Connect the QC terminal to the Outdoor Thermostat (ODT).
3. Using a cable tie, bundle the suspended Outdoor thermostat to the field thermostat wire bundle in the control box.



13 SEER HEAT PUMPS

The instructions listed below describe how to properly install the outdoor thermostat on 13 SEER heat pumps.

1. Connect one side of the wire (1) to a terminal on the Outdoor Thermostat (2).
2. Connect the terminal adapter (3) to the free terminal on the ODT (2).
3. Connect the free end of the wire (1) to the "W2" on the Defrost Board and the terminal (3) to the "E" on the Defrost Board.

